

Wessex
Rose



England's Largest, Latest & Most Luxurious Canal Hotel Boat

The Wessex Rose

The Wessex Rose Hotel Boat offers scheduled short break cruises along the beautiful Kennet & Avon Canal.



- *Fully inclusive cruising*
- *Luxury en-suite cabins*
- *All cabins double or twin*



- *TV & DVD in each room*
- *Large saloon with panoramic windows*
- *Under floor heating*



- *Roof top 'Starlight' deck*
- *Eco friendly*

Travel Agent Contact:

Cruising The Wessex Rose Way

2014 and we set off on our first full season, full of enthusiasm, with our coveted Visit England 5* Award, a brand new menu and an all new summer schedule.

We took on board customer comments, and the booking patterns seen in 2013, and revised our schedule to give a larger selection of longer cruises that proved so popular. In addition we have fine-tuned some of the routes to give them a more balanced feel yet still retaining the popular benefit of starting and finishing them all near railway station and with parking available.



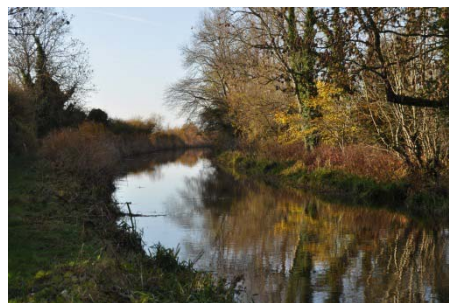
Over the winter we have grown fat writing, testing and sampling our new menu selection not to mention the arduous task of tasting and selecting the house wines!

But what is really special about cruising on the Wessex Rose? Well again we turned to our guests from 2013 and their comments, feedback and response to our discreet but direct questions during the cruises. We then spent the winter studying and understanding the results. The clear message that came out was that guests loved the pace of life and the fact that it is them who dictate the pace. They enjoyed the many opportunities to visit local places of interest, take strolls or longer walk, and generally make the most of the area thus fully enjoying the stunning beauty of the K&A.



From a personal perspective guests left lovely comments on the hospitality, the welcome and the friendly service that we work very hard to give. We were rewarded when our Visit England assessment resulted in a 5* award that we are now so proud of. It helps to underline our commitment to guests and the level of service and quality that we want to deliver. It guarantees that we will continue to work hard to maintain the standards we have set ourselves. We love the feedback that we receive from guests and always take great pride in them.

So what does the 2014 season hold? Well regrettably we can't magic up the weather that we had in 2013 but we are keeping everything crossed!! We have our new menu and wines and there is now a holiday to suit every occasion with 3, 4, 5, and 7 day cruises. We start at the end of March for early birds to see the canal burst into life in spring, through to October for that relaxing late break enjoying the gold and russet tones of an autumn cruise.



Whenever you choose to cruise the thing that never changes, regardless of season, is the spectacular beauty of the K&A, the quality and luxury of the Wessex Rose and the very very warm welcome that awaits.



David Franklin-Ross, Manager Eurolynx Travel Visits March 2014 to secure representation in NZ.



David takes the Helm (for a few seconds)



Our Moment of Fame

'Just act natural' said Anna the Plum Pictures producer who was filming us for the Ch4 TV program 'George Clark's Amazing Spaces'.



It was easy for her to say, it was the 6th of December 2012, the Wessex Rose hull had just

been completed and was being moved from Tyler Wilson to Milburn Boats for the fit out. Snow and ice was on the ground, it was about 5 degrees below freezing and she said 'Just act natural'!!

As the camera rolled and the questions were fired at us a friendship with Anna and the crew was sealed with a smile as, 29 tonnes of steel in the shape of our future, our life savings and some of the bank's money, swung on the end of a crane and she uttered the words 'just imagine for the camera that it had not yet arrived'. Such was our introduction to the 'other' side of TV.



As the build progressed and the winter of 2012/3 got colder and colder Anna and her crew visited more or less weekly to film each stage of the transformation from bare steel to luxury boat. Cameraman Peter clambered all over the boat to get the best shots and point his camera where no one else dare, just to capture the real flavor of what was happening on a day to day basis.



The 1st of May 2013 and launch day, the sun shone as if to greet the Wessex Rose as she was pulled out of the shed and into daylight for the first time. As 2 cranes deftly maneuvered the now 48 tonne boat onto a specialist abnormal load trailer Anna and Peter where there with cameras rolling, questions and interviews. Filming from the first movement out of the shed, through the journey on the road and right up to the time, late in the day, that the boat finally slipped into the water where she belonged.

After sailing the Wessex Rose from Northamptonshire, via the Grand Union and the Thames, to the Kennet & Avon the date was set for the final filming and the 'reveal' that George Clarke himself would star in. The day before the filming Jane arrived to 'dress'



as being the 'dresser' Jane, an author, was also in the process of writing the 'Amazing Spaces' book to go along with the series.

The sun shone, the temperature rose and the boat was positioned with the perfect backdrop of Caen Hill locks behind us and, with film cameras in place, sound men having done their level



checks, George arrived at the boat. Our nerves jangled but George quickly put us at ease as we filmed a guided tour of the boat, stopping to admire all the features and question us on the build and design. This was followed by more interviewing on the top deck, bathed in sunshine, before George, under instruction and a watchful eye, took the boat quite skillfully through a couple of locks.

However, from then on tensions only increased as we waited for the screening on TV. What had we said? Which bit would they use? Would we come over as nervous, or as bumbling wrecks, would the Yorkshire accent sound like a foreign language? The wait was unbearable. Then finally the date was



announced, the 7th of November 2013 and we would only see it for the first time at the

same time as the whole nation! We had invited friends on-board to share the moment and following a nice meal sat back to watch the show, and, for no explicable reason the TV signal was lost!!

A quick re-tune and there we were, in all our glory, prime time TV and the boat looking a million dollars. We just had to watch it again on CH4+1, then again on More4. The response was amazing with over 4000 hits on the web site.

The program has since been shown on TV in Scandinavia and in New Zealand and we are holding our breath to see where we pop up next.



George Clark's Amazing Spaces



- Series 1 in 2012 was so popular that Ch4 commissioned series 2
- Series 2 in 2013 was made up of 10 weekly hour long programs
- Each program featured 3 'Amazing Spaces' projects and an update George's own project
- George's own project was a giant multi shaped tree house, way up in the green canopy, which would be used by disabled people.
- George's tree house was at the side of Kielder Water in the Kielder Forest in Northumberland
- Projects followed ranged from converted busses to holiday home in a milk float, and of course a beautiful Hotel Boat!
- The program is produced by Plum Pictures who estimate that they film over 100 hours to make a 1 hour program
- The book that was published to go along with the series was researched and written by Jane Field-Lewis and the Wessex Rose is featured in chapter ??
- George Clarke was, and still is, known as the 'Restoration Man' a popular TV series where George follows, researches, and advises on, the re-building of old and derelict buildings with a difference.
- George, via Ch4, has a scrap book where projects in the series are featured. <http://scrapbook.channel4.com/programmes/george-clarkes-amazing-spaces>