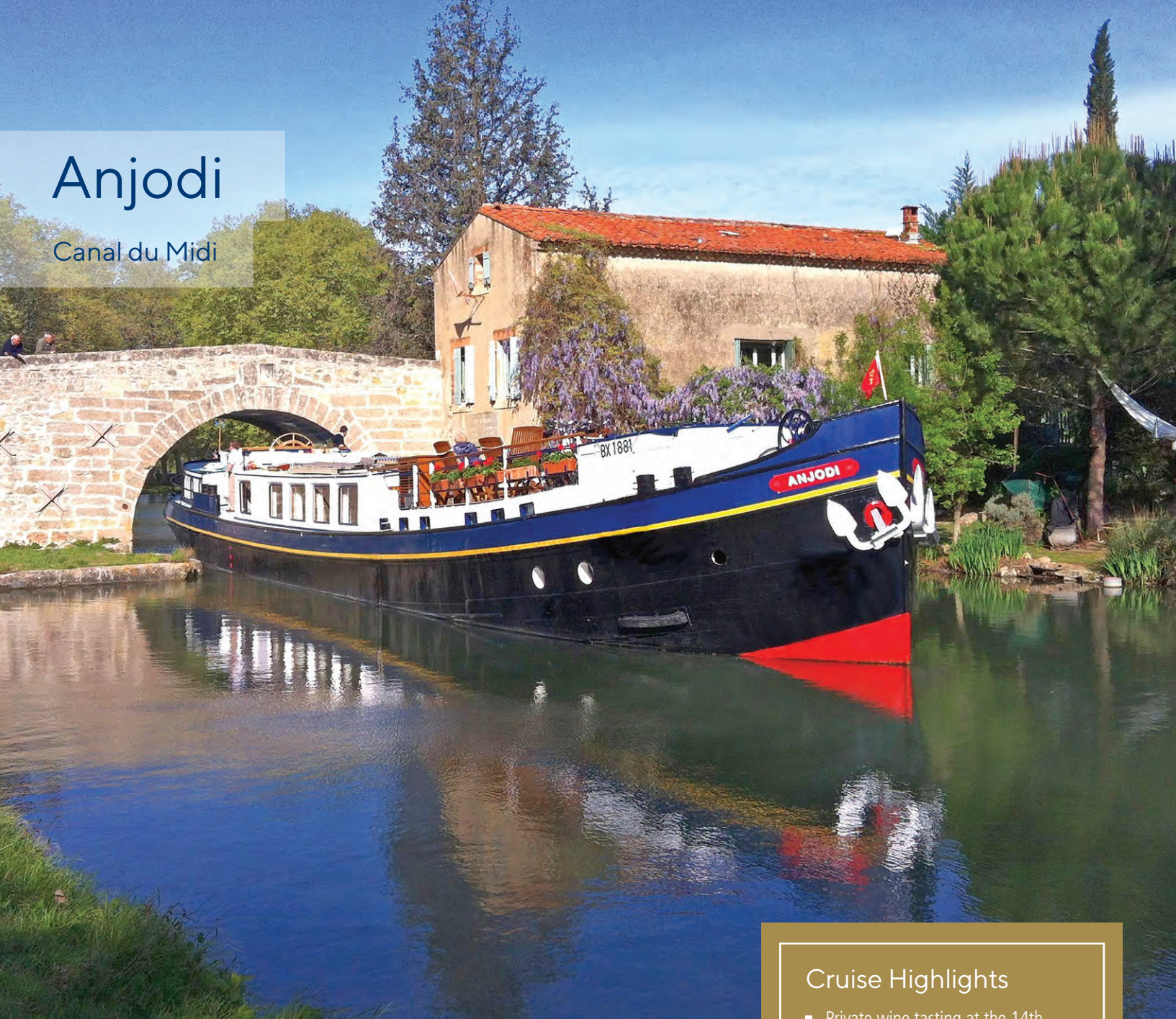


Anjodi

Canal du Midi



Anjodi: 🏠 First Class | 👥 8 Passengers | 👨‍🍳 4 Crew

Anjodi is very much a hotel barge of the classic Dutch design and also the founding member of our fleet, embarking on her first cruises along the historic Canal du Midi 35 years ago.

Her beautiful interior makes the most of traditional materials such as African hardwoods and shining brass to create a warm onboard feel, reminiscent of a classic yacht.

The charming saloon is particularly welcoming, with its combination of richly coloured wooden flooring, elegant French dining furniture and comfortable banquet seating, as well as a fully-stocked bar.

The four compact, cleverly-designed cabins, featuring hardwood panelling and brass Portholes, offer a choice of twin or double bedded accommodation, each with en suite facilities.

The spacious sundeck is shaded by an adjustable canopy and there are comfortable sun loungers and a spa pool to soak in with a glass of chilled white wine.

Anjodi is a very well-known hotel barge having achieved "film star" status some years ago following her many appearances in the television series Rick Stein's French Odyssey, when she carried the eponymous chef on a voyage of culinary discovery through Southern France. Why not follow in his footsteps with a cruise along the Canal du Midi, a 330-year-old canal with UNESCO World Heritage status.

Cruise Highlights

- Private wine tasting at the 14th century Château de Perdiguer
- Cruise through the world's oldest canal tunnel at Malpas
- See the spectacular hilltop village of Minerve
- View the Pyrenees mountains across the vineyards and discover Cathar history
- Tour Carcassonne – the most complete medieval fortified city in existence
- Excellent towpath for walking and cycling. "Biking Plus" option available

“*Classic yacht style amidst the vibrant colours of the south*”



Archbishop's Palace, Narbonne



Bagnas Nature Reserve



ITINERARY

Marseillan to Le Somail

Day 1 Marseillan to Bagnas

Guests are met in Narbonne and transferred by private chauffeured minibus to Anjodi where a champagne welcome awaits them. Enjoy a stroll round picturesque Marseillan or a visit to the local oyster farm before dinner on board.

Day 2 Bagnas to Villeneuve-les-Beziers

This morning we cruise along the 330-year-old Canal du Midi through the beautiful Bagnas nature reserve. After lunch on board, we visit Pezenas, the delightful Languedoc capital famed for its associations with the French playwright Molière. Optional visit to a Mediterranean beach before dinner on board.

Day 3 Villeneuve-les-Beziers to Malpas

After breakfast, we ascend the 7-lock flight of unique oval locks at Fonserrannes to arrive at our mooring at Malpas. This afternoon, we enjoy a winery tour and tasting at the 14th century Château de Perdiguer, famed for its frescoes and Cabernet Sauvignon, Pinot Noir and Chardonnay wines. Dinner on board.

Day 4 Malpas to Capestang

This morning's excursion is to Narbonne, where we tour the Archbishop's Palace, Cathedral and Via Domitia and explore the indoor market. This afternoon, we cruise through the world's oldest canal tunnel at Malpas, and on to our mooring in Capestang. Explore the magnificent 14th century architecture of the village before dinner ashore tonight at a gastronomic restaurant in Beziers.

Day 5 Capestang to Sallèles d'Aude

This morning we cruise through a series of locks on the Canal de la Robine to our mooring at Sallèles d'Aude. Following lunch on board, we visit Minerve, the ancient capital of Minervois, which boasts a 12th century Cathar fort with spectacular views of the surrounding limestone gorges, it is a town with a wealth of history. Dinner on board.

Day 6 Sallèles d'Aude to Le Somail

In the morning we embark on our final cruise, rejoining the historic Canal du Midi to arrive at the delightful village of Le Somail. After lunch, we visit the famed fortress city of Carcassonne. Captain's Farewell Dinner on board.

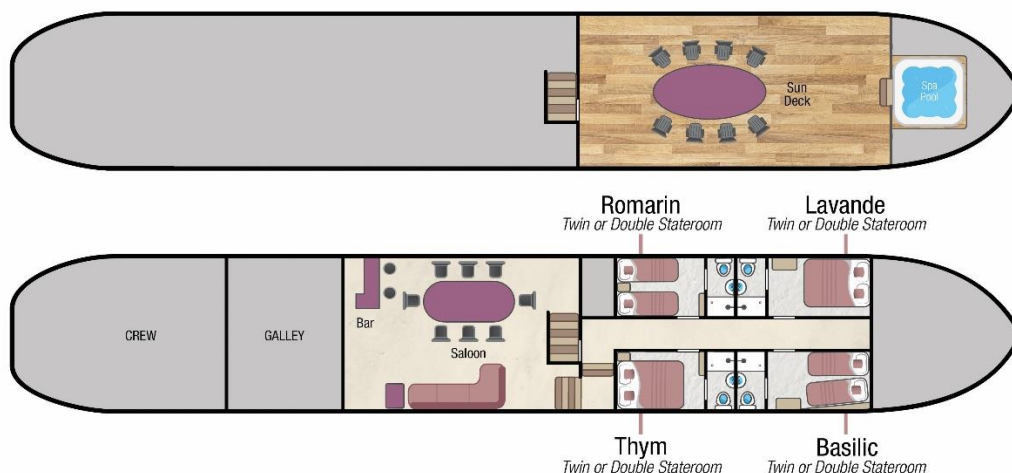
Day 7 Le Somail

After breakfast, guests are transferred by private chauffeured minibus to their choice of location in Narbonne.

Themed Cruises Available:

- Family
- Biking
- Wine Appreciation





Barge Specifics



Former purpose: Ex Freight Barge carrying grain between Amsterdam and Paris

Year of construction: 1929

Dimensions: 100ft (30.5m) x 16ft 6" (5.05m)

Year converted to a Hotel Barge: 1983

Generators: 2 x 220 volts generators (which are housed in soundproofed cocoons)

Main Engine: 185 HP Perkins Turbo

Maximum Speed: 10 knots

Water & fuel capacity: 9 tons of water and 3 tons of fuel

Your crew on board

Crew of 4: Captain, Tour Guide/Deckhand, Chef & Housekeeper

Nationality of Crew: The crew are mostly British and speak both English and French

Accommodation on board

Maximum 8 passengers / 4 staterooms

4 Staterooms can be configured with twin beds or a double bed.

Twin beds are highly recommended. If the cabin is configured as a double bed, one side of the bed will be against the wall, making access limited. This applies to all cabins with the exception of Basilic which when made as a double is accessed from the foot-end, and the bed width is wall-to-wall (please see bed dimension below).

All cabins have en-suite shower & WC, a fitted closet with hanging space and a small bedside table.

There is a storage drawer under each bed (Excludes Basilic cabin)

Cabin Sizes

Lavande:	102ft ² (9.47m ²)
Basilic:	95ft ² (8.82m ²)
Thym & Romarin:	91ft ² (8.45m ²)

The ceiling height is approximately 2 metres in all cabins.

All sizes are approximate and include the bathrooms.

There is a small 1cm step into each cabin.

There are 3 portholes in Romarin cabin. All other cabins have 4 portholes.

Size of the beds:

As singles, all beds are 2ft 7" (80cm) x 6ft (1.83m)
 As doubles (except Basilic), 5ft 3" (1.6m) x 6ft (1.83m)
 Basilic as a double is 6ft 7" (2.01m) x 6ft (1.83m)

Bathrooms: Each cabin has a stylish en-suite bathroom with shower, wash basin and WC. There is a step measuring 11cm to access the shower cubicle. Wash gel, hand soap, shampoo, towels, bathrobes & hairdryers are provided.

Climate Control

Each cabin has individually controlled reversible air conditioning.

Computer and Telephone

Complimentary Wi-Fi is available on board for guests bringing their own appliances. Connectivity can be limited in remote locations.

There is no passenger telephone on Anjodi

Currency

The local currency in France is the Euro.
We are unable to accept credit or debit cards on board.

Cycling & Walking

You are welcome to walk or cycle using the on board bicycles as often as you wish. Most guests choose to disembark the barge and cycle at their own pace, returning to the barge a little further along. The barge travels at a slow speed therefore catching up is not a problem.

There are 8 folding bikes on-board – helmets are provided. Children's bikes, helmets and bike seats can be arranged if required on request - please contact our Reservations team at least 8 weeks prior to departure.

Dining Room & Saloon

The comfortable saloon is 13ft x 21ft (3.9m x 6.4m) and the height is approximately 6ft 6" (2m). It is traditional and has lovely varnished hardwood and brass throughout.

Saloon has banquette seating, a coffee table and a fully stocked bar with a drinks cabinet & fridge. The dining table seats up to 8 guests at single sittings.

Electricity

Anjodi is wired for 220 and 240 volts but not 110 volts. We suggest you bring an adapter for your particular appliance, which corresponds to the standard French 2-pin plugs. If you wish to use your electrical appliance on board, please speak to a crew member on arrival to ensure it is suitable for the barge's electrical system.

European Waterways cannot be held responsible for unforeseen voltage fluctuations which sometimes occur when swapping from one voltage system to another.

Excursions

The Anjodi minibus is air conditioned and is a long wheelbase Mercedes Sprinter 215 which seats 8 passengers plus driver. It is used for transfers and excursions during your cruise.

For charter bookings, the itinerary can be adapted to suit your group's particular needs. If a destination or excursion is within a reasonable distance of the barge, we will do everything possible to arrange it. Please speak with our Reservations team in advance of your cruise and we can pre-arrange with the Captain.

Any guests not wishing to participate in an excursion are welcome to remain on board.

Facilities on board

- 6 person spa pool (hot tub)
- 8 Bicycles (See Cycling & Walking)
- A small library of books and maps
- A collection of board games
- Boules
- Hi-Fi system with CD player with selection of CD's.
- Guest i-Pods can be connected to the Hi-Fi system
- Nordic walking sticks (on request)

Food & Drink

All meals on board are freshly prepared by your chef and most meals are a set-menu (there is no choice available) International and French cuisine is featured.

We are able to arrange special meals, e.g. vegetarian / no fish / vegan etc, and we are able to cater for any preferences or allergies. However, it is most important that we are notified of any specific requirements at least 8 weeks prior to your departure date. Failure to notify European Waterways in advance of your cruise may result in disappointment on board.

There is no assigned seating for meals and the dining table on Anjodi seats all guests at single sittings.

Breakfast: Your day on Anjodi starts with a wholesome and balanced variety of breakfast foods, along with fresh breads & pastries, freshly-squeezed orange juice and hot beverages.

Lunch is usually buffet style with colourful salads, pates and cold meats accompanied by hot soup or entrée, delicious deserts and a selection of regional cheeses accompanied by quality wines selected by the chef.

Dinner: Always a gastronomic adventure created by your talented chef. A taste of regional cuisine by candlelight, complemented by fine wines, followed by a selection of regional cheeses, coffee and liqueurs.

Captain's farewell dinner is held on the last night of your cruise. Guests may choose to dress slightly more formal.

Drinks included in the cruise price: Non-alcoholic beverages and regular or decaffeinated tea and coffee, whole or low-fat milk, are offered with all meals. The well-stocked bar is open 24 hours, which includes wines, spirits, beers & soft drinks. All wines are provided with meals and there is a Champagne welcome on arrival.

Drinks not included in the cruise price: Some brands of Champagne and special vintage wines, however these can be purchased in advance of your cruise at cost price – please speak to our reservation team. We do not recommend specific beverage orders unless you are chartering the whole barge.

Hot Air Ballooning

The region 'Anjodi' cruises in is not suitable for hot air ballooning.

Laundry

We recommend you bring sufficient clean clothing for your cruise as there are no laundry facilities on board. However, the crew may be able to assist in an emergency on a request basis.

Luggage / What to pack

Please try and fit everything for your cruise into one reasonably sized suitcase per person. Soft bags are preferable. There is only enough space on the barge and minibus for up to 8 suitcases and 8 pieces of hand luggage.

Practical comfort and casual clothing is the norm aboard Anjodi and for most excursions. The dress code for dinner is relaxed and informal. For the Captain's Farwell Dinner on the final evening, guests often dress up, which is optional.

The weather in the south of France is generally warm. June, July, and August is the warmest often being in the mid 30's°C / top 80's°F.

Suggested things to pack:

- Light clothing including shorts and T-shirts. A sweater or lightweight jacket is recommended for evenings and the air-conditioned interiors.
- During spring and autumn, you may need medium weight clothing. A lightweight raincoat for showery times would be advisable.
- In summer, a sun hat can be useful.
- Comfortable walking shoes with textured non-slip soles are recommended.
- Anjodi has a spa pool so don't forget your swim wear. Towels are provided.

Medical

Please let us know in advance of your cruise if you require frequent or ongoing medical attention.

The crew are unable to administer medicines but can accompany you to a chemist for you to purchase any necessary medicines. Due to your cruise often being in a rural location, we recommend you bring all necessary medication with you.

Doctors are usually not far away for an urgent consultation and the Emergency Services can be called if required.

Problem during your Cruise

If you have a problem during your cruise, please give us the immediate opportunity to make things right. Please bring any concern to the private attention of your Captain who will often be able to solve any issue immediately.

Restricted Mobility

Please let us know in advance of your cruise if you have a physical disability and require any assistance.

Anjodi has a boarding ramp with a single rope handrail and there are 3 steps on to the deck. There are 8 steps between the deck and the Saloon and 3 steps from the Saloon to the cabin level. There are adequate handrails throughout.

All passengers should be able to manage 15 steps (including 3 from the boarding ramp).

There is a 4.5" (11cm) lip to access the shower in each bathroom.

Wheelchairs cannot be used on-board and can only be used to assist on excursions where there are often cobbled streets. Sometimes rough ground may hinder a wheelchair.

If you would like us to provide a wheelchair for your arrival, please notify our Reservations team at least 8 weeks before arrival. There is a small hire charge of approximately €100 which should be paid directly to the barge Captain on arrival.

Safety and Security

Once you are on board, your Captain will talk you through the Cruise Safety Procedures. Safety Instructions are detailed on the last page of this document.

Please note that European Waterways cannot be responsible for any valuables that you bring on board. We strongly recommend that you do not bring valuables with you unless required and that you ensure that all valuables are covered by your travel insurance.

Safes are provided in each cabin except Lavande. The cabin doors are not usually locked, for safety reasons.

Smoking

We have a strict non-smoking policy for safety reasons and for the comfort of your fellow passengers.

If you would like to smoke we request that you smoke outside or on the deck away from other guests.

Sundeck

The Sundeck on Anjodi is 12ft x 22ft (3.6m x 6.7m) and for al-fresco dining and relaxing there is a table, 8 reclining chairs and the 6 person hot-tub. There is a large canopy providing sun-shade.

Themed Cruises

Wine Appreciation, Golf and Family cruise itineraries are available for charter groups, please ask our Reservations team for more details.

Tipping

Gratuities are not included in the cruise fare. Tipping is entirely discretionary but is greatly appreciated by the crew if you are fully satisfied with the level of service on board.

As a guideline, the average tip given by our guests from around the world is approximately 5% of the Cruise Fare.

The usual way to give the tip is to give the amount in cash as one lump sum to the Captain / Cruise Director on the last day of the cruise. They will distribute the amount equally amongst the crew.

Euros or Dollars are equally appreciated. ATMs are accessible for cash withdrawal on most itineraries during the cruise and the crew can advise where these are located.

Transfers

For details of the Anjodi vehicle, please see "Excursions". The approximate transfer duration between Narbonne & Anjodi is 1 hour.

Water

Tap water in France and on board Anjodi is potable and bottled water is available.

Safety Instructions on Anjodi

On arrival the Captain will talk you through the Cruise Safety Procedures on board.

In addition, it is important that all passengers are familiar with the safety instructions detailed below.

- Please follow the instructions of the Captain and crew at all times.
- Remember that decks can be slippery. Please wear non-slip shoes and do not run or jump whilst on board.
- Do not walk on the side or rear decks or outside the guard rails.
- Passengers are not permitted in the engine rooms, technical areas or crew accommodation at any time, or in the galley or wheelhouse unless accompanied by a crew member.
- Do not embark or disembark the barge unless the gangplank and handrail are in place or the crew have advised that it is safe to do so. Never do so when the barge is moving.
- Be careful when the vessel is being moored up with the barge ropes. In particular do not step into a loop in the rope or try to release the mooring rope from a bollard.
- Keep clear of any overhead obstructions and remain seated if on deck whilst the barge passes under bridges with restricted headroom.
- Do not attempt to touch the sides of any lock or bridge.
- Do not open lower deck portholes whilst the barge is moving.
- Life jacket preservers are located in designated lockers in your cabin or in designated deck lockers. Once on board, please take the time to identify their location and read the instructions.
- For fire safety reasons, smoking is not permitted anywhere inside the barge.
- The barge's equipment such as the hot-tub and bicycles must only be used following preparation by the crew. Use of the bicycles and the hot tub is at your own risk. Breakable glasses are not permitted in the hot tub and alcohol consumption is not advised.
- There is an open bar policy on board. However, excessive alcohol consumption can be dangerous, particularly in a warm climate and in proximity to deep water and the Captain has the discretion to withhold alcohol if safety to passengers or crew is at risk.

In an emergency

- Keep calm. Do not return to your cabin to recover your possessions.
- If you discover a fire on board, sound the fire alarm and notify a crew member immediately. If possible, close doors behind you to confine the fire. Please take the time to identify the location of fire alarms and fire extinguishers.
- If the alarm sounds or you hear repeated continuous blasts on the barge horn, you must, if possible, assemble on the sundeck for further instructions.
- If you discover water below deck, notify a crew member immediately and go to the sundeck to await further instructions.
- If you are in your cabin and the way to the sundeck is obstructed, follow the signs to the alternative fire exit. Please take the time to identify all fire exits.
- There is a defibrillator in case of cardiac arrest. Instructions are in English and located by the machine.
- The emergency number for fire, police or medical assistance on all public phone networks is 112.

Please ask a member of the crew on board if you require any further safety advice