

# Enchanté

Canal du Midi



**Enchanté:** 🏠 Ultra Deluxe | 👤 8 Passengers | 👥 5 Crew

Enchanté is a spacious, double-decker hotel barge that has been built to the highest standard to offer a stylish on board ambience that is perfect for enjoying a cruise through this sun-drenched region.

The hotel barge is tastefully furnished in a contemporary style, creating a bright, art deco atmosphere. She has a large saloon with outstanding attention to detail, including an open-plan demonstration galley where guests can see their skilled chef at work.

The luxurious air-conditioned accommodation is in four equally spacious twin or double-bedded suites, the largest of any hotel barge on the Canal du Midi and all with superbly appointed en suite shower rooms.

Outside, the spacious sun deck boasts an alfresco dining area, a gorgeous spa pool and comfortable loungers to relax in while the countryside drifts slowly by.

Enchanté is a hotel barge that offers an alluring blend of luxury and modernity. She is a vessel that will charm any discerning traveller on her sedate journey through the Midi countryside.

## Cruise Highlights

- Private winery tour and tasting of fine Minervois wines
- Tour Narbonne's Archbishop's Palace and experience the colourful market
- Visit an olive oil press to sample the famous Lucques olives
- Visit beautiful Lagrasse and its 8th century abbey, with lunch in a stunning location
- Tour of the medieval city of Carcassonne
- Excellent opportunities for walking and biking. Biking Plus option available

“*Contemporary luxury  
in charming surroundings*”





Narbonne



Carcassonne



Suite



## ITINERARY

### Sallèles d'Aude to Trèbes

#### Day 1 Sallèles d'Aude

Guests are met in Narbonne and transferred by private chauffeured minibus to Enchanté where a champagne welcome awaits them. Dinner on board.

#### Day 2 Sallèles d'Aude to Roubia

Morning cruise along the Grand Bief to the historical village of Roubia. Afternoon excursion to "L'Oulibo", a co-operative olive oil press where we will sample the famous Lucques olives. We continue on to Minerve, the ancient capital of the Minervoise, which boasts a 12th century Cathar fort surrounded by deep limestone gorges. Dinner on board.

#### Day 3 Roubia to Homps

This morning's excursion is to Narbonne, where we tour the Archbishop's Palace, Cathedral and Via Domitia and explore the indoor market. Afternoon cruise past vineyards and pine trees to the picturesque village of Homps, guests are free to explore a little before dinner on board.

#### Day 4 Homps to Puichéric

This morning we visit a Benedictine Abbey, founded in the 8th century in the stunning village of Lagrasse. Next we have lunch ashore in a spectacular setting overlooking the Corbières vineyards, before returning to the barge to cruise to Puichéric. Dinner on board.

#### Day 5 Puichéric to Marseillette

Today we cruise along the 330-year-old canal, ascending its locks as the relief becomes steeper. The afternoon excursion is a wine tour and tasting at Château Saint Jacques d'Albas in Minervoise, one of the few regions to receive the much-envied French mark of approval for wines known as A.O.C. (Appellation d'Origine Contrôlée). Dinner on board.

#### Day 6 Marseillette to Trèbes

This morning we visit the famed fortress city of Carcassonne, dating back to the Gallo-Roman era this is the most complete medieval fortified city in existence today. This afternoon we glide past picturesque vineyards and hamlets to Trèbes. Once a major ally to Carcassonne, this medieval town still retains unique paintings within its 13th century church. Farewell Dinner on board.

#### Day 7 Trèbes

After breakfast, guests are transferred by private chauffeured minibus to their choice of location in Narbonne.

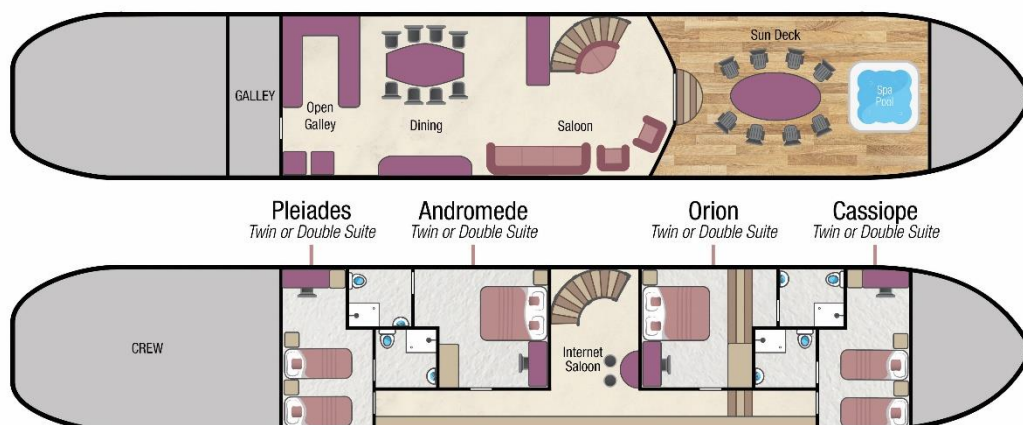
#### Themed Cruises Available:

- Golf
- Family
- Wine Appreciation





# Enchanté - Fact Sheet



## Barge Specifics



Former purpose: Ex Freight Barge from Belgium  
 Year of construction: 1958  
 Dimensions: Length 100ft (30.58m). Width 16ft 6" (5.05m)  
 Year converted to a Hotel Barge: 2008 / 2009  
 Generators: 2 x 220 volt generators both equipped with hospital silencers for night running  
 Main Engine: 855-M220pk Cummins  
 Maximum Speed: 10 knots  
 Water & fuel capacity: 8000L of water and 4000L of fuel

## Your crew on board

Crew of 5: Captain, Tour Director, Chef, Housekeeper & Hostess

Nationality of Crew: Mostly British

## Accommodation on board

Maximum 8 passengers / 4 suites

All suites can be configured with 2 single beds or a double. The cabin theme is white and linen with *Percale* bed sheets. The furniture is made of mahogany and the new, deep and comfortable carpets were recently fitted.

Each suite has a stylish fully tiled en-suite bathroom. All are equipped with hair dryer, shower cubicle, wash basin and WC. Each are supplied with washing gel, hand soap, shampoo, towels and bathrobes. The bathroom flooring is solid teak and the showers are very spacious.

## Cabin Sizes

All the suites are similar in size measuring 165ft<sup>2</sup> (15.5m<sup>2</sup>).

**There are 3 steps in Orion cabin leading to the bathroom.**  
**There are 3 steps in the corridor leading to Cassiope.**

The bathrooms each measure 33ft<sup>2</sup> (3m<sup>2</sup>) and are included in the suite sizes above.

The shower trays in each bathroom measure 2.95ft x 2.95ft (90cm x 90cm).

**Ceiling height:** All cabins are a minimum of 6ft 6" (2m)

Cassiope & Orion are at the Bow end and Andromede & Pleiades are at the Stern.

Cassiope & Pleiades each have 3 portholes in the cabin & no porthole in bathroom.

Orion & Andromede each have 2 portholes in the cabin & 1 porthole in bathroom.

### Size of the beds:

As singles all beds are 2ft 9"x 6ft 5" (0.8m x 1.98m).

As doubles all beds are 5ft 9"x 6ft 5" (1.6m x 1.98m).

When the suite is set up in twin bed configuration, the beds are side by side with a small gap between them.

**All sizes are approximate.**

## Climate Control

Enchanté has reversible Air Conditioning and Central Heating throughout with individual temperature control in each cabin.

## Computer and Telephone

There is a computer with 3G internet access available aboard Enchanté. This can be found at the bottom of the stairs in the office area and is available for all guests to use.

Wi-Fi is available for guests' bringing their own appliances, however, there are some moorings where connection to the internet is very slow and sometimes when the barge is cruising the connection is not possible because the barge is out of signal range.

There is no passenger telephone available on Enchanté.

## Currency

The local currency in France is the Euro.

We are unable to accept credit or debit cards on board.

## Cycling & Walking

The on board bicycles are available for use as often as you wish. Most guests choose to disembark the barge at a lock and visit local villages, returning to the canal and meeting the barge a little further along. The barge travels very slowly and therefore catching up is not a problem.

There are 8 adult size folding bikes each with 5 gears and low top tube / cross bar. Cycle helmets are provided on board. Specialist bicycles, children's bikes and child bike seats can be arranged if required. Please contact our Reservation Team at least 8 weeks prior to your departure.

Because the barge cruises at a slow pace, walking is a popular activity.

## Dining Room & Saloon

Room Size: 13ft x 30ft (3.96m x 9.1m), the height is 6ft 10" (2.1m).

Large panoramic windows stretch the entire length of this area.

The dining area has a large glass table, seating all 8 guests at a single sitting. The design compliments the contemporary

modern look of Enchanté. An open Demonstration Kitchen Galley allows guests to watch as the Master Chef prepares the meals on the granite benches, sharing his recipes and demonstrating his techniques.

A fully stocked bar and Art Deco drinks cabinet completes the area.

The saloon is furnished with sofas and armchairs, all upholstered in Alcantara with oak flooring.

Large panoramic windows stretch the entire length of the barge, allowing plenty of light and the beautiful scenery to be appreciated.

## Electricity

The barge is wired for 220 and 240 volts (not 110 volts).

We recommend you bring an adapter for your particular appliances, which correspond to the standard French two pin plugs.

If you wish to use your electrical appliance, please ask one of the crew when you arrive on board to ensure that it is suitable for the barge's electrical system.

European Waterways cannot be held responsible for unforeseen voltage fluctuations which sometimes occur when swapping from one voltage system to another.

## Excursions

The Enchanté barge minibus is a 9-seater (including driver) silver-grey Volkswagen Transporter Caravelle. It is a stretch version for luggage and has 3 zone air-conditioning.

For charter bookings, the itinerary can be adapted to suit your group's particular needs. If a destination or excursion is within a reasonable distance of the barge, we will do everything we can to arrange it. Please speak with our Reservations Team in advance of your cruise and we can pre-arrange with the Captain.

Any guests not wishing to participate in an excursion are welcome to remain on the barge.

## Facilities on board

- 8 person spa-pool (hot tub) with electronic thermostat
- 8 Bicycles (See Cycling & Walking)
- A small library of books and maps
- A collection of board games
- Boules
- Telescope
- Computer with 3G internet connection (See Computer & Telephone)
- Sound System iPod / MP3 / CD player

## Food & Drink

All meals on board are freshly prepared by your chef and most meals are a set-menu (there is no choice available). International and French cuisine is featured.

We are able to arrange special meals, e.g. vegetarian / no fish / vegan etc; and we are able to cater for any preferences or allergies. However, it is most important that we are notified of any specific requirements at least 8 weeks prior to your departure date. Failure to notify European Waterways in advance of your cruise may result in disappointment on board.

There is no assigned seating for meals and the dining room on board Enchanté accommodates all guests at a single sitting.

**Breakfast:** Usually continental with fresh breads, pastries, jams, fruit, cereals, yoghurts, freshly squeezed orange juice, teas and coffee. Eggs (poached, boiled, fried, scrambled or omelette) are available each morning on request.

**Lunch:** A casual three course affair comprising of a hot soup, or entrée, patés and cold meats accompanied by colourful salads, or a hot main course followed by delectable desserts. A selection of wines are served daily.

**Dinner:** Always a gastronomic adventure created by your talented chef. A taste of regional cuisine by candlelight, complemented by fine wines, followed by a selection of regional cheeses, coffee and liqueurs.

**Captain's Farewell Dinner:** is held on the last night of the cruise. Guests may choose to dress slightly more formal.

**Drinks included in the cruise price:** Non-alcoholic beverages and regular or decaffeinated tea and coffee, semi-skimmed milk, are offered with all meals. The well-stocked bar is open 24 hours a day serving beers, wines & spirits. Wines are served with meals and there is a Champagne welcome on arrival.

**Drinks not included in the cruise price:** Some champagnes and special vintage wines are not included although you may purchase bottles at cost price, if you let us know in advance how many of each you require. We do not recommend special ordering unless you are chartering the whole barge.

## Hot Air Ballooning

The region Enchanté cruises in is not suitable for hot air ballooning.

## Laundry

We recommend you bring sufficient clean clothing for your cruise as there are no laundry facilities on board. However,

the crew may be able to assist in an emergency on a request basis.

## Luggage / What to pack

Please try and fit everything for your cruise into one reasonably sized suitcase per person. Soft bags are preferable. There is only enough space on the barge and minibus for a total of up to 8 suitcases and 8 small pieces of hand luggage.

Practical comfort and casual clothing is the norm aboard Enchanté and for most excursions. The dress code for dinner is relaxed and informal. For the Captain's Farewell Dinner on the last evening, guests often dress-up, which is optional.

The weather in the south of France is generally warm. June, July, and August is the warmest often being in the mid 30's.

Suggested things to pack:

Light clothing including shorts and T-shirts. A sweater or lightweight jacket is recommended for evenings and the air-conditioned interiors.

During spring and autumn, you may need medium weight clothing. A lightweight raincoat for showery times would be advisable. In summer, a sun hat can be useful.

Comfortable walking shoes with textured non-slip soles are recommended.

Enchanté has a spa pool so don't forget your swim wear, towels are provided.

## Medical

Please let us know in advance of your cruise if you require frequent or ongoing medical attention.

The crew are unable to administer medicines but can accompany you to a chemist for you to purchase any necessary medicines. Due to your cruise often being in a rural location, we recommend you bring all necessary medication with you.

Doctors are usually not far away for an urgent consultation and the Emergency Services can be called if required.

## Problem during your Cruise

If you have a problem during your cruise, please give us the immediate opportunity to make things right. Please bring any concern to the private attention of your Captain who will often be able to solve any issue immediately.

## Restricted Mobility

Please let us know in advance of your cruise if you have a physical disability and require any assistance.

There are 3 steps down from the Enchanté sundeck to the saloon. From the saloon, there is a curving staircase of 11 steps down to the cabins on the lower deck.

Orion has 3 steps within the cabin up to the bathroom. There are 3 steps in the corridor to access Cassiope.

Because of the many steps on board, Enchanté is not really suitable for wheelchair bound guests. The toilets are on the lower deck and the dining area is above so a visit to the restroom requires a minimum of 11 steps up and down.

Wheelchairs cannot be used on board and can only be used to assist on excursions where there are often cobbled streets. Sometimes rough ground may hinder a wheelchair.

If you would like us to provide a wheelchair for your arrival, please notify our Reservations Team at the time of booking. There is no charge for the wheelchair, but passengers must be accompanied by someone who is able to push the chair as the crew are unable to assist.

## Safety & Security

Once you are on board, your Captain will talk you through the Cruise Safety Procedures. Safety Instructions are detailed on the last page of this document.

Please note that European Waterways cannot be responsible for any valuables that you bring on board. We strongly recommend that you do not bring valuables with you unless required and that you ensure that all valuables are covered by your travel insurance.

Safes are provided in each cabin on board but cabin doors are not usually locked, for safety reasons.

## Smoking

There is a strict non-smoking policy for safety reasons and for the comfort of fellow passengers. If you would like to smoke, you are requested to smoke outside or on the deck away from fellow passengers.

## Sundeck

12' x 21' (3.6m x 6.4m) furnished with a Dimension One hot tub, an al fresco dining table with 8 chairs and a sun-canopy for shade. The flooring has an anti-slip surface.

## Themed Cruises

Wine Appreciation, Culinary, Golf and Family cruise itineraries are available for charter groups, please ask our Reservation Team for more details. Special interest cruises often have a supplement and further details can be found at [www.europeanwaterways.com](http://www.europeanwaterways.com)

## Tipping

Gratuities are not included in the cruise fare. Tipping is entirely discretionary but is greatly appreciated by the crew if you are fully satisfied with the level of service on board. As a guideline, the average tip given by our guests from around the world is approximately 5% of the Cruise Fare.

The usual way to give the tip is to give the amount in cash as one lump sum to the Captain / Cruise Director on the last day of the cruise. They will distribute the amount equally amongst the crew.

Euros or Dollars are equally appreciated. ATMs are accessible for cash withdrawal on most itineraries during the cruise and the crew can advise where these are located.

## Transfers

For details of the Enchanté vehicle, please see "Excursions". The approximate transfer duration between Narbonne & Enchanté is less than 1 hour.

## Water

Tap water in France and on board Enchanté is potable and bottled water is available.

# Safety Instructions on Enchanté

**On arrival the Captain will talk you through the Cruise Safety Procedures on board.**

**In addition, it is important that all passengers are familiar with the safety instructions detailed below.**

- Please follow the instructions of the Captain and crew at all times.
- Remember that decks can be slippery. Please wear non-slip shoes and do not run or jump whilst on board.
- Do not walk on the side or rear decks or outside the guard rails.
- Passengers are not permitted in the engine rooms, technical areas or crew accommodation at any time, or in the galley or wheelhouse unless accompanied by a crew member.
- Do not embark or disembark the barge unless the gangplank and handrail are in place or the crew have advised that it is safe to do so. Never do so when the barge is moving.
- Be careful when the vessel is being moored up with the barge ropes. In particular do not step into a loop in the rope or try to release the mooring rope from a bollard.
- Keep clear of any overhead obstructions and remain seated if on deck whilst the barge passes under bridges with restricted headroom.
- Do not attempt to touch the sides of any lock or bridge.
- Do not open lower deck portholes whilst the barge is moving.
- Life jacket preservers are located in designated lockers in your cabin or in designated deck lockers. Once on board, please take the time to identify their location and read the instructions.
- For fire safety reasons, smoking is not permitted anywhere inside the barge.
- The barge's equipment such as the hot tub and bicycles must only be used following preparation by the crew. Use of the bicycles and the hot tub is at your own risk. Breakable glasses are not permitted in the hot tub and alcohol consumption is not advised.
- There is an open bar policy on board. However, excessive alcohol consumption can be dangerous, particularly in a warm climate and in proximity to deep water and the Captain has the discretion to withhold alcohol if safety to passengers or crew is at risk.

## **In an emergency**

- Keep calm. Do not return to your cabin to recover your possessions.
- If you discover a fire on board, sound the fire alarm and notify a crew member immediately. If possible, close doors behind you to confine the fire. Please take the time to identify the location of fire alarms and fire extinguishers.
- If the alarm sounds or you hear repeated continuous blasts on the barge horn, you must, if possible, assemble on the sundeck for further instructions.
- If you discover water below deck, notify a crew member immediately and go to the sundeck to await further instructions.
- If you are in your cabin and the way to the sundeck is obstructed, follow the signs to the alternative fire exit. Please take the time to identify all fire exits.
- The emergency number for fire, police or medical assistance on all public phone networks is 112.

**Please ask a member of the crew on board if you need further safety advice**