

# L'Impressionniste

Southern Burgundy



**L'Impressionniste:** 🏠 Deluxe | 👤 12 Passengers | 👨‍🍳 6 Crew

A supremely refined vessel, L'Impressionniste offers an onboard ambience that combines traditional and modern French influences to ensure that you cruise in style and comfort.

Her light and airy interior features picture windows and prints reminiscent of the era after which she has been named. In the spacious saloon with its rich-coloured teak flooring and soft lighting, there are balloon-backed dining chairs and elegant banquettes that complete the effect.

The cabins, each one bearing the name of a renowned Impressionist painter, offer a choice of accommodation in two large junior suites or four amply sized staterooms, complemented by modern en suite shower rooms. Twin or double bed configurations are also available.

L'Impressionniste glides gently through the picturesque Ouche Valley in Southern Burgundy through locks with their charming lock-houses. You will see medieval villages perched on hilltops and have the opportunity to discover a region famed for its history and viticulture, with visits to such places as Beaune, the local 'wine capital', and the elegant city of Dijon.

## Cruise Highlights

- Visit Clos de Vougeot, home of the Chevaliers du Tastevin
- Tour of Dijon and its markets
- Private Tour of the Château de Commarin, accompanied by its aristocratic owner
- Gastronomic private lunch and wine tasting at Château de Beaune
- Visit to medieval Châteauneuf-en-Auxois
- Optional hot air ballooning
- Excellent towpath for walking and cycling. "Biking Plus" option available



Château de Commarin



Dijon



Junior Suite

## ITINERARY

### Fleurey-sur-Ouche to Escommes

#### Day 1 Fleurey-sur-Ouche

Guests are met at The Hotel Westminster in Paris and transferred by private chauffeured minibus to the elegant L'Impressionniste where a champagne reception and gourmet dinner awaits them.

#### Day 2 Fleurey-sur-Ouche to Sainte Marie-sur-Ouche

This morning, we cruise along this enchanting canal past sleepy villages and pretty lock houses. After lunch we visit Clos de Vougeot for a tour of the iconic cellars and a private tasting of fine Burgundy wines at another long-established domaine. Dinner on board.

#### Day 3 Sainte Marie-sur Ouche to La Bussière

After breakfast, we enjoy a walking tour of old Dijon with its impressive Notre-Dame de Dijon, vivid produce markets and ample shopping opportunities. Lunch on board is followed by a leisurely afternoon cruise to La Bussière. Dinner on board.

#### Day 4 La Bussière to Pont d'Ouche

After a short morning cruise, we take a drive through the vineyards to the lauded "vigne de l'enfant Jesus", where a wine expert gives us a real insight into the production of their finest wines. We continue to the wine capital of Beaune, for a winery tour, private tasting and a gastronomic lunch at the Château de Beaune, owned by Bouchard Père et Fils since 1820. Afterwards, we visit the fascinating 15th century Hôtel-Dieu Hospice and explore the town, before a short evening cruise and dinner on board.

#### Day 5 Pont d'Ouche to Vandenesse

This morning we cruise to Vandenesse-en-Auxois, crossing the only aqueduct on the Burgundy Canal. Lunch is served aboard, before we visit the medieval village, craft shops and castle of Châteauneuf-en-Auxois, which offers a fine overview of the pastoral surroundings. Dinner on board.

#### Day 6 Vandenesse to Escommes

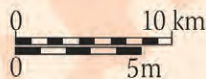
Our final cruise takes us to the canal summit, 1,250 feet above sea level, just before the Pouilly tunnel. This afternoon we are escorted around the moat encircled Château de Commarin by none other than Count Bertrand de Vogue, the current resident and 26th generation of the de Vogue family to maintain continuous residence at the château since the 13th century. Captain's Farewell Dinner on board.

#### Day 7 Escommes

After breakfast, guests are transferred to Paris.

#### Themed Cruises Available:

- Golf
- Culinary
- Family
- Wine Appreciation

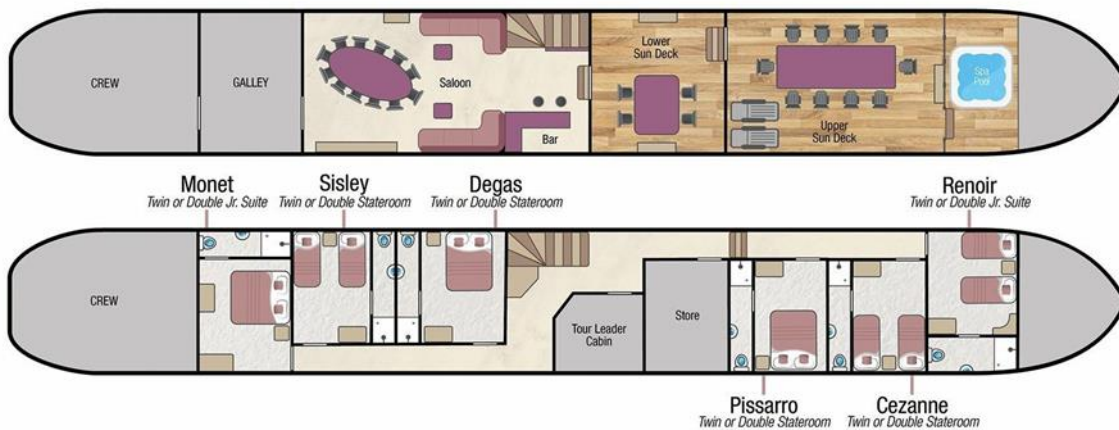


Côte de Beaune



A journey through  
Burgundy's vineyards

# L'Impressionniste - Fact Sheet



## Barge Specifics



Former purpose: Freight barge carrying cargo in Holland  
 Year of construction: 1960 in Holland  
 Dimensions: 126ft (38.4m) x 16ft 6" (5.05m)  
 Year converted into a hotel barge: 1996  
 Generators: 2 x 220 volt generators (silent night running) for air-conditioning & heating  
 Main Engine: Main engine Z15 SCANIA 250 H.P  
 Maximum Speed: 12 knots  
 Water & fuel capacity: 12 tons of water & 3.5 tons of fuel

## Your crew on board

Crew of 6: Captain, Tour Guide, Chef, Housekeeper, Hostess & Deckhand  
 Nationality of Crew: Mostly European and usually speak English and other languages

## Accommodation on board

Maximum 12 passengers / 2 Junior Suites & 4 Staterooms all with en-suite shower, wash basin & WC.

All cabins can be configured with as twin beds or 1 double bed.

Bed Sizes: As twin beds 3ft x 6ft 2" (90cm x 1.9m) or a double bed 6ft x 6ft 2" (1.8m x 1.9m)

## Cabin Sizes & Bathrooms

**Monet Junior Suite** (stern): 156ft<sup>2</sup> (14.57m<sup>2</sup>)  
 Height: 6ft 5" (1.96m)

Windows: 4 portholes (3 opening)

**Renoir Junior Suite** (bow): 152ft<sup>2</sup> (14.1m<sup>2</sup>)  
 Height: Max 7ft 8" (2.33m) / Min 7ft (2.13m) at the door

Windows: 4 large opening windows. 2 on the port side & 2 on the starboard. 2 of these are in the bathroom

**Sisley Stateroom** (mid-stern): 124ft<sup>2</sup> (11.59m<sup>2</sup>)  
 Height: 6ft 5" (1.96m)

Windows: 3 portholes (2 opening)

**Degas Stateroom** (mid-stern): 124ft<sup>2</sup> (11.59m<sup>2</sup>)  
 Height: 6ft 4" (1.94m)

Windows: 3 portholes (2 opening)

**Pissarro Stateroom** (mid-bow): 110ft<sup>2</sup> (10.2m<sup>2</sup>)  
 Height: Max 7ft 1" (2.15m) / Min 6ft 9" (2.08m) at the door

Windows: 2 opening windows

**Cezanne Stateroom** (mid-bow): 110ft<sup>2</sup> (10.2m<sup>2</sup>)  
 Height: Max 7ft 2" (2.18m) / Min 7ft (2.13m) at the door

Windows: 2 opening windows

**All sizes are approximate.**

The en-suite bathrooms are included in the cabin sizes detailed above.

All bathrooms have a shower cubicle with tiled walls, W.C. and hand basin. Each is supplied with wash gel, hand soap, shampoo, towels, robes, slippers and a hair-dryer.

The shower in the 2 Junior Suites measure 2ft 9"² (90cm²)  
The shower in the 4 Staterooms measure 2ft 6"² (78cm²)

## Climate Control

Each cabin has Air Conditioning and Central Heating.

## Computer and Telephone

Complimentary Wi-Fi is available on board for guests bringing their own appliances. Connectivity can be limited in remote locations.

There is no passenger telephone on L'Impressionniste.

## Currency

The local currency in France is the Euro.  
We are unable to accept credit or debit cards on board.

## Cycling & Walking

You are welcome to walk or cycle using the on board bicycles as often as you wish. Most guests choose to disembark the barge at a lock and visit local villages, returning to the canal and meeting the barge a little further along. The barge travels at a slow speed therefore catching up is not a problem.

There are 12 bikes on board. Children's bikes, helmets and child bike seats can be arranged if required on request. Please contact our reservations department at least 8 weeks prior to departure.

## Dining Room & Saloon

The lovely and light Saloon is 25ft x 13ft (7.62m x 3.96m) and is elegantly furnished with banquette seating and a coffee table. There is a fully stocked bar with a drinks cabinet and fridge. The dining table seats all 12 guests at single sittings.

The staircase to the lower cabin deck has 9 steps and a 90° turn.

## Electricity

The barge is wired for 220 and 240 volts and the socket in the bathrooms have 110 volts. We recommend you bring an adapter for your particular appliance, which corresponds to the standard French two-pin plugs. If you wish to use your electrical appliance on-board, please speak to a crew member on arrival to ensure it is suitable for the barge's electrical system.

European Waterways cannot be held responsible for unforeseen voltage fluctuations which sometimes occur when swapping from one voltage system to another.

## Excursions

L'Impressionniste has to 2 barge vehicles for transfers and excursions during your cruise. A 9-seater long-wheelbase Mercedes Sprinter and a 7-seater Mercedes Vito. Both are air-conditioned. The vehicle capacity includes the driver. For charter bookings, the itinerary can be adapted to suit your group's particular needs. If a destination or excursion is within a reasonable distance of the barge, we will do everything possible to arrange it. Please speak with our Reservations team in advance of your cruise and we can pre-arrange with the Captain.

Any guests not wishing to participate in an excursion are welcome to remain on board.

## Facilities on board

- 6 person Spa pool (hot tub)
- 12 Bicycles (See Cycling & Walking)
- A small library of books and maps
- A collection of board games
- Boules
- Nordic walking sticks (on request)
- Hi-Fi System with CD player, radio and iPod docking station. There is a selection of CDs on board.
- Guest i-Pods can be connected to the Hi-Fi system

## Food & Drink

All meals on board are freshly prepared by your chef and most meals are a set-menu (there is no choice available). French and international cuisine is featured.

We are able to arrange special meals, e.g. vegetarian / no fish / vegan etc, and we are able to cater for any preferences or allergies. However, it is most important that we are notified of any specific requirements at least 8 weeks prior to your departure date. Failure to notify European Waterways in advance of your cruise may result in disappointment on board.

There is no assigned seating for meals and the dining area on board L'Impressionniste accommodates all guests at a single sitting.

**Breakfast:** Your day on L'Impressionniste starts with a wholesome and balanced variety of breakfast foods, along with fresh breads & pastries, freshly-squeezed orange juice and hot beverages.

**Lunch** is a discovery of delectable regional specialities, in the chef's fashion, served in a relaxed but refined style accompanied with a selection of quality wines chosen by the chef.

**Dinner:** Always a gastronomic adventure created by your talented chef. A taste of regional cuisine by candlelight, complemented by fine wines, followed by a selection of regional cheeses, coffee and liqueurs.

**Captain's farewell dinner** is held on the last night of your cruise. Guests may choose to dress slightly more formal.

**Drinks included in the cruise price:** Non-alcoholic beverages and regular or decaffeinated tea and coffee, whole or low fat milk, are offered with all meals. The well-stocked bar is open 24 hours, which includes wines, spirits, beers & soft drinks. All wines are provided with meals and there is a Champagne welcome on arrival.

**Drinks not included in the cruise price:** Some Champagnes (with the exception of the Captain's reception) and special vintage wines, however these can be purchased in advance of your cruise at cost price, please speak to our Reservation team. We do not recommend specific beverage orders unless you are chartering the whole barge.

## Hot Air Ballooning

Once on board, the Captain can arrange this directly with the hot air balloon company on your behalf. Flights usually last between 1 and 1½ hours and are weather dependent. The cost is approximately 250 Euros per person. You will need to contract and pay the balloon company directly on the day of the flight (they do accept credit cards).

Kindly advise our Reservations team in advance if you are interested in ballooning. The main balloon operators we work with are Air Escargot [www.air-escargot.com](http://www.air-escargot.com) and France Montgolfieres [www.franceballoons.com](http://www.franceballoons.com)

## Laundry

We recommend you bring sufficient clean clothing for your cruise as there are no laundry facilities on board. However, the crew may be able to assist in an emergency on a request basis.

## Luggage / What to pack

Please try and fit everything for your cruise into one reasonably sized suitcase per person. Soft bags are preferable. There is only enough space on the barge for up to 12 suitcases and 12 pieces of hand luggage.

Practical comfort and casual clothing is the norm aboard L'Impressionniste and for most excursions. The dress code for dinner is relaxed and informal. For the Captain's Farewell Dinner on the final evening, guests often dress up, which is optional.

The weather in France is generally warm. June, July, and August is the warmest often being in the mid 30's.

Suggested things to pack:

- Light clothing including shorts and T-shirts. A sweater or lightweight jacket is recommended for evenings and the air-conditioned interiors.
- During spring and autumn, you may need medium weight clothing. A lightweight raincoat for showery times would be advisable.
- In summer, a sun hat can be useful.

- Comfortable walking shoes with textured non-slip soles are recommended.
- L'Impressionniste has a spa pool so don't forget your swim wear. Towels are provided.

## Medical

Please let us know in advance of your cruise if you require frequent or ongoing medical attention.

The crew are unable to administer medicines but can accompany you to a chemist for you to purchase any necessary medicines. Due to your cruise often being in a rural location, we recommend you bring all necessary medication with you.

Doctors are usually not far away for an urgent consultation and the Emergency Services can be called if required.

## Problem during your Cruise

If you have a problem during your cruise, please give us the immediate opportunity to make things right. Please bring any concern to the private attention of your Captain who will often be able to solve any issue immediately.

## Restricted Mobility

Please let us know in advance of your cruise if you have a physical disability and require any assistance.

L'Impressionniste has a gangplank from the bank to the barge with 2 handrails and there are 2 wide steps between the Deck and the Saloon. There are 9 steps from the saloon deck to the cabins, the stair-case has a 90° turn and a handrail on the right and the wall on the left when descending.

Wheelchairs cannot be used on-board and can only be used to assist on excursions, however many visits encounter cobbled streets or rough ground which may hinder wheelchair access.

If you would like to hire a wheelchair to be available for your arrival, please notify our Reservations team at least 8 weeks before departure. The small hire charge should be paid directly to the barge Captain on arrival and is approximately 100 Euros.

## Safety and Security

Once you are on board, the Captain will talk you through the Cruise Safety Procedures. Safety Instructions are detailed on the last page of this document.

Please note that European Waterways cannot be responsible for any valuables that you bring on board. We strongly recommend that you do not bring valuables with you unless

required and that you ensure that all valuables are covered by your travel insurance.

Safes are provided in each cabin on board but cabin doors are not usually locked, for safety reasons.

## Smoking

We have a strict non-smoking policy for safety reasons and for the comfort of your fellow passengers.

If you would like to smoke we request that you do so outside or on the deck away from fellow passengers.

## Sundecks

There are 2 sundecks. The first is 12ft 6" x 35ft (3.8m x 10.6m), and the second is 12ft 6" x 9ft 6" (3.8m x 2.9m). Both decks are made of African Iroko hard-wood and there is a heated Spa pool (hot-tub) for up to 6 passengers.

For al-fresco dining there is a large table plus 2 smaller ones and 11 chairs and 2 recliners.

## Themed Cruises

Wine Appreciation, Golf and Family cruise itineraries are available for charter groups, please contact our Reservations team for more details. Special interest cruises often have a supplement and further details can be found at [www.europeanwaterways.com](http://www.europeanwaterways.com)

## Tipping

Gratuities are not included in the cruise fare. Tipping is entirely discretionary but is greatly appreciated by the crew if you are fully satisfied with the level of service on board. As a guideline, the average tip given by our guests from around the world is approximately 5% of the Cruise Fare. The usual way to give the tip is to give the amount in cash as one lump sum to the Captain / Cruise Director on the last day of the cruise. They will distribute the amount equally amongst the crew.

Euros or Dollars are equally appreciated. ATMs are accessible for cash withdrawal on most itineraries during the cruise and the crew can advise where these are located.

## Transfers

For details of the L'Impressionniste vehicles, please see "Excursions". The approximate transfer duration between Paris & L'Impressionniste is 3 hours 15 minutes.

## Water

Tap water in France and on board L'Impressionniste is potable and bottled water is available.

# Safety Instructions on L'Impressionniste

**On arrival, the Captain will talk you through the Cruise Safety Procedures on board.**

**In addition, it is important that all passengers are familiar with the safety instructions detailed below.**

- Please follow the instructions of the Captain and crew at all times.
- Remember that decks can be slippery. Please wear non-slip shoes and do not run or jump whilst on board.
- Do not walk on the side or rear decks or outside the guard rails.
- Passengers are not permitted in the engine rooms, technical areas or crew accommodation at any time, or in the galley or wheelhouse unless accompanied by a crew member.
- Do not embark or disembark the barge unless the gangplank and handrail are in place or the crew have advised that it is safe to do so. Never do so when the barge is moving.
- Be careful when the vessel is being moored up with the barge ropes. In particular do not step into a loop in the rope or try to release the mooring rope from a bollard.
- Keep clear of any overhead obstructions and remain seated if on deck whilst the barge passes under bridges with restricted headroom.
- Do not attempt to touch the sides of any lock or bridge.
- Do not open lower deck portholes whilst the barge is moving.
- Life jacket preservers are located in designated lockers in your cabin or in designated deck lockers. Once on board, please take the time to identify their location and read the instructions.
- For fire safety reasons, smoking is not permitted anywhere inside the barge.
- The barge's equipment such as the hot tub and bicycles must only be used following preparation by the crew. Use of the bicycles and the hot tub is at your own risk. Breakable glasses are not permitted in the hot tub and alcohol consumption is not advised.
- There is an open bar policy on board. However, excessive alcohol consumption can be dangerous, particularly in a warm climate and in proximity to deep water and the Captain has the discretion to withhold alcohol if safety to passengers or crew is at risk.

**In an emergency**

- Keep calm. Do not return to your cabin to recover your possessions.
- If you discover a fire on board, sound the fire alarm and notify a crew member immediately. If possible, close doors behind you to confine the fire. Please take the time to identify the location of fire alarms and fire extinguishers.
- If the alarm sounds or you hear repeated continuous blasts on the barge horn, you must, if possible, assemble on the sundeck for further instructions.
- If you discover water below deck, notify a crew member immediately and go to the sundeck to await further instructions.
- If you are in your cabin and the way to the sundeck is obstructed, follow the signs to the alternative fire exit. Please take the time to identify all fire exits.
- The emergency number for fire, police or medical assistance on all public phone networks is 112.

**Please ask a member of the crew on board if you require any further safety advice**