

Holland

Dutch Canals & Waterways



Panache: 🏆 Deluxe | 👤 12 Passengers | 👤 6 Crew

La Nouvelle Etoile: 🏆 Ultra Deluxe | 👤 8 Passengers | 👤 5 Crew

Cruise the delightful waterways of Holland's western provinces in the Spring past windmills sitting majestically above the polders. Springtime is, of course, the time of year when visitors have the opportunity to see the tulips at their very best, but lovers of culture also come from far and wide to tour the traditional Dutch cities and their many museums. Delft, Leiden and Haarlem will charm you, just as they did the great Dutch artists.

Visitors to Holland are entranced by the vivid colours of the bulb fields and the magnificence of the formal displays such as at the world-renowned Keukenhof Gardens which we visit. Other attractions, including the Royal Delft pottery and Zaanse Schans with its conservation area, are equally memorable.

Two of our hotel barges – Panache (see page 66) and La Nouvelle Etoile (see page 92) – cruise the waterways of Holland at the best time of year, in the Spring.

Cruise Highlights

- Tour Keukenhof Gardens with the largest display of flowers in the world
- Visit the Aalsmeer flower auction
- Tour the fascinating conservation area of Zaanse Schans
- Visit the Royal Delft pottery to see the world famous earthenware being hand-made and painted
- Tour picturesque Haarlem and visit a museum of the Dutch painter, Frans Hals
- Tour the charming city of Leiden, Rembrandt's birthplace

Typical Cuisine Aboard

Gastronomy

Braised Beef Fillet in Juniper Berry and Red Wine Jus; Saddle of Lamb with Eggplant Caviar; Roasted Duck Breast with a Grillotes Sauce.

Wine Cellar

Domaine Henri Bourgeois, Sancerre 'Les Baronnes'; Domaine Bouchard Père et Fils, Beaune du Château Premier Cru; Domaine Bouchard Père et Fils, Pouilly Fuissé 'Vignes Romanes'

Cheese Board

Gouda; Limburger; Leyden; Brokkel Ould; Maasdam; Roomano; Reypenaer; Leerdrammer; Wijngaard; Boeren Truffel Kaas.

“A land of colour in the Spring”

Panache & La Nouvelle Etoile



The World Famous Delft Pottery



Panache Moored in Haarlem



La Nouvelle Etoile Cruising in Holland



Keukenhof Gardens



ITINERARY

Alkmaar to Delft

Day 1 Alkmaar

Guests are met in Amsterdam and transferred by private chauffeured minibus to Panache where a champagne welcome awaits you. Dinner on board.

Day 2 Alkmaar to Zaanse Schans

Perhaps visit the Alkmaar cheese museum for a tasting, before our first cruise to Zaanse Schans. After lunch on board, we take a tour of Zaanse Schans, an open air conservation area and museum, giving you a vivid impression of the Dutch way of life in the 17th and 18th centuries. Dinner on board.

Day 3 Zaanse Schans to Haarlem

We enjoy an early morning cruise to the historic city of Haarlem, dating back to the 13th century. After lunch on board, we visit the world famous Keukenhof Gardens, renowned for its 100 acres filled with over 7 million flowering bulbs. Dinner ashore this evening at a local restaurant.

Day 4 Haarlem to Oude Wetering

An optional early morning tour to Aalsmeer flower auction, where some 17 million cut flowers from all over the world are traded each day. Breakfast is followed by a tour of Haarlem, including St. Bavo's Cathedral on the main square and a fine selection of boutique shops. After lunch on board, we cruise to our mooring at Oude Wetering. Dinner on board.

Day 5 Oude Wetering to Leiden

After breakfast we cruise to Leiden, the beautiful birthplace of Rembrandt. This afternoon we take a tour of the city and a private boat trip in which we learn all about the city's historical charm. Free time to explore the many local cafes, boutique shops, markets and antique dealers. Dinner on board.

Day 6 Leiden to Delft

Morning cruise to Delft, a city which began as the home port of the Dutch East India Company. Following lunch, we visit the Royal Delft factory, just 5 minutes' walk from our mooring, to learn how this world-famous porcelain is made. You will have time during the afternoon to explore Delft further. Captain's Farewell Dinner on board.

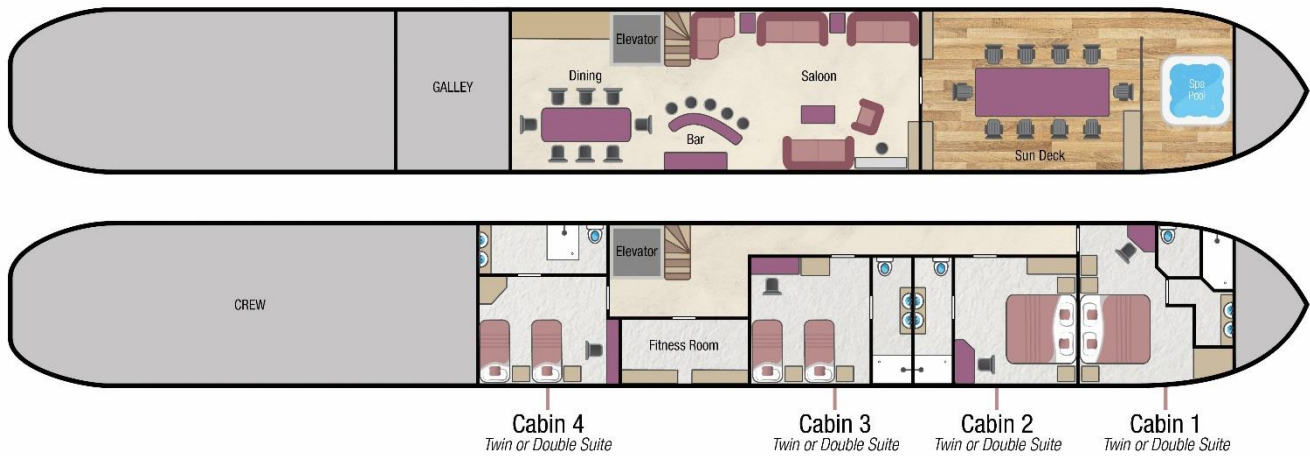
Day 7 Delft

After breakfast, guests are transferred by private chauffeured minibus to their choice of location in Amsterdam.

Themed Cruises Available:

- Golf

La Nouvelle Etoile - Fact Sheet



Barge Specifics



Former purpose:	Transport barge
Original year of construction:	1964
Dimensions:	129ft x 17ft (39.3m x 5.18m)
Year converted to a Hotel Barge:	2002
Generators:	2 x Yanmar 40kva
Main Engine:	2 x Volvo Penta 180hp
Maximum Speed:	9 Knots
Water capacity:	24m ³
Fuel capacity:	5m ³ diesel

Your crew on board

Crew of 5:	Captain, Tour Guide/Deckhand, Chef, Housekeeper, Pilot/Engineer.
Nationality of crew:	Our crew are usually European. All speak fluent English as well as French, Dutch & German.

Accommodation on board

Maximum 8 passengers / 4 suites

All 4 suites can be configured with 2 single beds or a double bed.

All beds are 200cm long by 90cm wide (6ft 7" by 3ft)

Each suite has an en-suite shower room. There is ample storage and each has 1 wardrobe, 1 cupboard with shelves and a large drawer under each bed for suitcases. All cabins have a night table with small drawers, television with DVD player and panoramic windows. All cabins are fitted with safes.

Bedding provided is sheets with an eiderdown or blankets (no duvets).

Cabin Sizes

All suites are 13ft 2" x 16ft 5" (4m x 5m) including shower room

Ceiling height: in the cabins is 6ft 7" (2.02m)

En-suite shower rooms:

Each shower room measures 13ft 2" x 4ft (4m x 1.2m)

Each has a large walk-in shower with tiled floor and walls and 2 wash basins. They all have WC in a separate room within the en-suite. Washing gel, hand soap, shampoo, towels, face cloths, dressing gowns and hair dryers are all provided.

There are no portholes in the cabins. There are large size windows (2f high x 3ft wide), which cannot be opened.

All sizes are approximate.

Climate Control

Each suite has individually controlled air conditioning and central heating.

Computer and Telephone

Wi-Fi is available throughout the barge and in each suite for passengers who wish to bring their own appliances, this may be subject to availability in more remote locations.

In the saloon there are plenty of USB ports integral to the seating for charging cameras, phones and i-pads

There are no passenger phones on board La Nouvelle Etoile.

Currency

The local currency in all counties where La Nouvelle Etoile cruises is the Euro.

We are unable to accept credit or debit cards.

Cycling & Walking

Most cruise itineraries offer lovely opportunities to walk and cycle along the towpaths. However this can be limited when cruising in Holland and also between Holland, Belgium and France.

You are welcome to walk or cycle using the on board bicycles as often as you wish. Most guests choose to disembark the barge at a lock and visit local villages, returning to the canal and meeting the barge a little further along. The barge travels at a slow speed therefore catching up is not a problem.

There are 8 bikes on-board, 4 regular bikes with 8 gears and 4 E-bikes. Safety helmets are provided. Children's bikes, helmets and child bike seats can be arranged if required on request. Please contact our reservations department at least 8 weeks prior to departure.

Dining Room & Saloon

The Saloon area combines the Lounge, Cocktail Bar and spacious Dining Room and is 14m x 4.80m (46ft x 15ft 9") with a ceiling height of 7ft 4" (2.23m).

The Lounge and dining area are each 23ft (7m) in length and the Cocktail Bar area is located between the two.

The Lounge area has a small library, a CD/DVD player and an upright piano and is furnished in rich teak wood.

There is an elevator between floors which helps accommodate guests less mobile.

Electricity

La Nouvelle Etoile is wired for 220 volts with a 110 volt socket in each bathroom. We recommend you bring an adapter for your particular appliance, which corresponds to the standard French 2-pin plugs. If you wish to use your electrical appliance on-board, please speak to a crew member on arrival to ensure it is suitable for the barge's electrical system.

European Waterways cannot be held responsible for unforeseen voltage fluctuations which sometimes occur when swapping from one voltage system to another

Excursions

La Nouvelle Etoile has an air-conditioned Mercedes Sprinter which is used for transfers and excursions. It has extra headroom and a sliding step.

For charter bookings, the itinerary can be adapted to suit your group's particular needs. If a destination or excursion is within a reasonable distance of the barge, we will do everything we can to arrange it. Please speak with our Reservations team in advance of your cruise and we can pre-arrange with the Captain.

Any guests not wishing to participate in an excursion are welcome to remain on the barge.

Facilities on board

- Gymnasium (exercise room) on the lower deck with a treadmill, exercise bike and weights.
- Elevator between floors which can fit 5 people
- 4 person Jacuzzi hot-tub on foredeck
- Electric Sun Canopy on foredeck, retracts when not required.
- Herb garden
- 4 Regular Bikes & 4 E-Bikes (see cycling and walking)
- Large pop up TV, DVD & CD player in the Saloon
- 24hrs Coffee, Tea and Hot Chocolate machine
- Terrace heating outside
- Pioneer sound system with Bose speakers (guests can play their own music through a wireless device into the speakers).
- Upright Piano
- Wedgewood porcelain and Christofle silver
- TV & DVD player in each cabin

Food & Drink

All meals on board are freshly prepared by your chef and most meals are a set-menu (there is no choice available). International and local cuisine is featured.

We are able to arrange special meals, e.g. vegetarian / no fish / vegan etc, and we are able to cater for any preferences or allergies. However it is most important that we are notified of any specific requirements at least 8 weeks prior to your departure date.

Failure to notify European Waterways in advance of your cruise may result in disappointment on board.

There is no assigned seating for meals and the dining table on board La Nouvelle Etoile accommodates all guests at a single sitting.

Breakfast: Your day on La Nouvelle Etoile starts with a Continental Breakfast with fresh breads & pastries, fruit, freshly-squeezed orange juice and hot beverages. A hot breakfast option is always offered cooked to order.

Lunch is usually buffet style with colourful salads, pates and cold meats accompanied by hot soup or entrée, delicious deserts and a selection of regional cheeses accompanied by quality wines selected by the chef.

Dinner: Always a gastronomic adventure created by your talented chef. A taste of regional cuisine by candlelight, complemented by fine wines, followed by a selection of regional cheeses, coffee and liqueurs.

Captain's farewell dinner is held on the last night of your cruise. Guests may choose to dress slightly formal.

Drinks included in the cruise price: The well-stocked bar is open 24 hours, which includes wines & premium spirits, beers & soft drinks. All wines are provided with meals and there is a Champagne welcome on arrival. Non-alcoholic beverages and regular or decaffeinated tea and coffee, whole or low fat milk, are offered with all meals.

Drinks not included in the cruise price: Some brands of Champagne and special vintage wines, however these can be purchased in advance of your cruise at cost price, please speak to our Reservations team. We do not recommend specific beverage orders unless you are chartering the whole barge.

Hot Air Ballooning

Hot Air Ballooning is usually available when cruising in Champagne & Burgundy in France.

Once on board, the Captain can arrange this directly with the hot air balloon company. Flights usually last for approximately 1 hour and are weather dependent. The cost is approximately 230 Euros per person and this should be paid directly to the balloon company on the day of the flight (they do accept credit cards).

Kindly advise our Reservations team in advance if you are interested in ballooning.

One of the operating company is France Montgolfieres and their website is www.franceballoons.com

Laundry

On the lower deck, there are laundry facilities available for guests to use. A washing machine (powder is provided), tumble dryer and an iron & ironing board.

Luggage / What to pack

Please try and fit everything for your cruise into one reasonably sized case per person. Soft bags are preferable as these can be stored in the drawers under the beds.

Practical comfort and casual clothing is the norm aboard La Nouvelle Etoile and for most excursions. The dress code for dinner is relaxed and informal. For the Captain's Farewell Dinner on the last evening, guests often dress-up, which is optional.

The weather is hottest in June, July, and August when temperatures can reach the mid 30s°C / top 80s°F.

Suggested things to pack:

- Light clothing including shorts and T-shirts. A sweater or lightweight jacket is recommended for evenings and the air-conditioned interiors.
- During spring and autumn, you may need medium weight clothing. A lightweight raincoat for showery times would be advisable.
- In summer, a sun hat can be useful.
- Comfortable walking shoes with textured non-slip soles as the deck can be slippery when wet.
- There is a hot tub on board, so don't forget your swim suit.

Medical

Please let us know in advance of your cruise if you require frequent or ongoing medical attention.

The crew are unable to administer medicines but can accompany you to a pharmacy for you to purchase any necessary medicines. Due to your cruise often being in a rural location, we recommend you bring all necessary medication with you.

Doctors are usually not far away for an urgent consultation and the Emergency Services can be called if required.

Problem during your Cruise

If you have a problem during your cruise, please give us the immediate opportunity to make things right. Please bring any concern to the private attention of your Captain who will often be able to solve any issue immediately.

Restricted Mobility

There are 10 steps between the Salon to the lower cabin deck and a further 2 steps down to access cabins 3 & 4. Handrails are fitted throughout.

There is an elevator on board which measures 3ft 7" (1.1m²). The cabin most suited for passengers with mobility restrictions is cabin #4 as there are handrails in the en-suite bathroom for the toilet and shower.

Any passengers with restricted mobility, please contact our reservation team for more details.

Safety and Security

Once you are on board, your Captain will talk you through the Cruise Safety Procedures. Safety Instructions are detailed on the last page of this document.

Please note that European Waterways cannot be responsible for any valuables that you bring on board. We strongly recommend that you do not bring valuables with you unless required and that you ensure that all valuables are covered by your travel insurance.

Safes are provided in each cabin on board La Nouvelle Etoile. The cabin doors are not usually locked for safety reasons.

Smoking

We have a strict non-smoking policy for safety reasons and for the comfort of your fellow passengers.

If you would like to smoke we request that you smoke outside or on the deck away from other guests.

Sundeck

The lovely sun deck measures 17ft 6" x 22ft (5.3m x 6.7m) and has a Spa Pool which can accommodate 4 people. There are 8 reclining chairs for sunbathing and a large table for dining al-fresco and for shade, there is an electronic retractable canopy. The sundeck also has outdoor heating should the evening turn chilly.

Themed Cruises

Biking, Walking & Wine Appreciation cruise itineraries are available for charter groups, please ask our Reservations team for more details.

Special interest cruises often have a supplement, details can be found at www.europeanwaterways.com

Tipping

Gratuities are not included in the cruise fare. Tipping is entirely discretionary but is greatly appreciated by the crew if you are fully satisfied with the level of service on board. As a guideline, the average tip given by our guests from around the world is approximately 5% of the Cruise Fare.

The usual way to give the tip is to give the amount in cash as one lump sum to the Captain / Cruise Director on the last day of the cruise. They will distribute the amount equally amongst the crew.

Euros or Dollars are equally appreciated. ATMs are accessible for cash withdrawal on most itineraries during the cruise and the crew can advise where these are located.

Transfers

For details of La Nouvelle Etoile vehicle, please see "Excursions". The approximate transfer duration is between 2 and 3 hours depending on the cruise itinerary & direction, except for cruises in Holland when the transfer is just 45 minutes.

Water

Tap water on board La Nouvelle Etoile is potable and bottled water is also available. There is also a water softener on board.

Safety Instructions on La Nouvelle Etoile

On arrival, the Captain will talk you through the Cruise Safety Procedures on board.

In addition, it is important that all passengers are familiar with the safety instructions detailed below.

- Please follow the instructions of the Captain and crew at all times.
- Remember that decks can be slippery. Please wear non-slip shoes and do not run or jump whilst on board.
- Do not walk on the side or rear decks or outside the guard rails.
- Passengers are not permitted in the engine rooms, technical areas or crew accommodation at any time, or in the galley or wheelhouse unless accompanied by a crew member.
- Do not embark or disembark the barge unless the gangplank and handrail are in place or the crew have advised that it is safe to do so. Never do so when the barge is moving.
- Be careful when the vessel is being moored up with the barge ropes. In particular do not step into a loop in the rope or try to release the mooring rope from a bollard.
- Keep clear of any overhead obstructions and remain seated if on deck whilst the barge passes under bridges with restricted headroom.
- Do not attempt to touch the sides of any lock or bridge.
- Do not open lower deck portholes whilst the barge is moving.
- Life jacket preservers are located in designated lockers in your cabin or in designated deck lockers. Once on board, please take the time to identify their location and read the instructions.
- For fire safety reasons, smoking is not permitted anywhere inside the barge.
- The barge's equipment such as the hot tub and bicycles must only be used following preparation by the crew. Use of the bicycles and the hot tub is at your own risk. Breakable glasses are not permitted in the hot tub and alcohol consumption is not advised.
- There is an open bar policy on board. However, excessive alcohol consumption can be dangerous, particularly in a warm climate and in proximity to deep water and the Captain has the discretion to withhold alcohol if safety to passengers or crew is at risk.

In an emergency

- Keep calm. Do not return to your cabin to recover your possessions.
- If you discover a fire on board, sound the fire alarm and notify a crew member immediately. If possible, close doors behind you to confine the fire. Please take the time to identify the location of fire alarms and fire extinguishers.
- If the alarm sounds or you hear repeated continuous blasts on the barge horn, you must, if possible, assemble on the sundeck for further instructions.
- If you discover water below deck, notify a crew member immediately and go to the sundeck to await further instructions.
- If you are in your cabin and the way to the sundeck is obstructed, follow the signs to the alternative fire exit. Please take the time to identify all fire exits.
- The emergency number for fire, police or medical assistance on all public phone networks is 112.

Please ask a member of the crew on board if you require any further safety advice