

La Belle Époque

Northern Burgundy



La Belle Époque: 🏠 Deluxe | 👥 12 Passengers | 👨‍🍳 6 Crew

La Belle Époque in her first life carried logs from Burgundy to Paris, but today she is transformed into a deluxe hotel barge carrying a very different cargo along the same canals.

She has been designed with both elegance and passenger comfort in mind and her welcoming features include a wood-panelled saloon/dining room with bespoke, hand-built seating and a spacious sun deck with spa pool. The comfortable cabin accommodation comprises two junior suites and four staterooms and a choice of twin or double beds, all with marble en suite facilities.

La Belle Époque is the perfect vessel to take you on a gentle voyage of discovery through a region studded with tradition and history that goes back centuries. As she meanders along the Burgundy Canal with its undulating countryside, you will find that the towpath is always there for spot of walking or cycling.

Cruise Highlights

- Visit the UNESCO World Heritage Site of Abbaye de Fontenay
- Private wine tasting of Chablis wines in the cellars of a renowned Domaine
- Visit to Château d'Ancy-le-Franc
- Private Champagne Tasting at a Boutique Champagne House
- Dine with a Baroness at the magnificent Château de Ricey-Bas
- Excellent towpath for walking & biking. "Biking Plus" option available
- Optional hot air ballooning

“*A gentle cruise through rolling hills past medieval villages*”



ITINERARY

Venarey-les-Laumes to Tanlay

Day 1 Venarey-les-Laumes

Guests are met at The Hotel Westminster in Paris and transferred by private chauffeured minibus to La Belle Epoque where a champagne welcome awaits. Dinner on board.

Day 2 Venarey-les-Laumes to Montbard

This morning we cruise through a variety of picturesque pastoral villages to our mooring at Montbard. After lunch, we enjoy a visit to the hilltop village of Flavigny-sur-Ozerain, where the film 'Chocolat' was set, or a tour of the medieval town of Semur-en-Auxois. Dinner on board.

Day 3 Montbard to Ravières

A morning cruise with excellent walking and cycling opportunities, passing the 18th century Forges de Buffon. Afternoon visit to the exquisite UNESCO World Heritage Site of Abbaye de Fontenay, founded by St Bernard in 1118. A serene evening cruise to Ravières, followed by dinner on board.

Day 4 Ravières to Ancy-le-Franc

Following breakfast aboard we head to Les Riceys, the only wine growing area of the Champagne region to have 3 Appellation d'Origine Contrôlées. Here we visit the Maison Alexandre Bonnet for a private champagne tasting in this truly elegant setting. Next we take a short drive to Château de Ricey-Bas for a gourmet lunch with the Baroness herself, which we take in either the private salon or the atmospheric vaulted 13th century kitchen. This afternoon we cruise on to our mooring at Ancy-le-Franc. Dinner on board.

Day 5 Ancy-le-Franc to Lezennes

This morning we tour the stunning Château d'Ancy-le-Franc, renowned for containing France's biggest collection of Renaissance murals. In the afternoon, a gentle descent through the picturesque locks to moor at Lezennes. Dinner on board.

Day 6 Lezennes to Tanlay

After breakfast we enjoy a leisurely cruise to our final mooring at Tanlay. Following lunch, we tour the vineyards and town of Chablis and enjoy a private wine tasting at one of the renowned family run wine-houses. Captain's Farewell Dinner on board.

Day 7 Tanlay

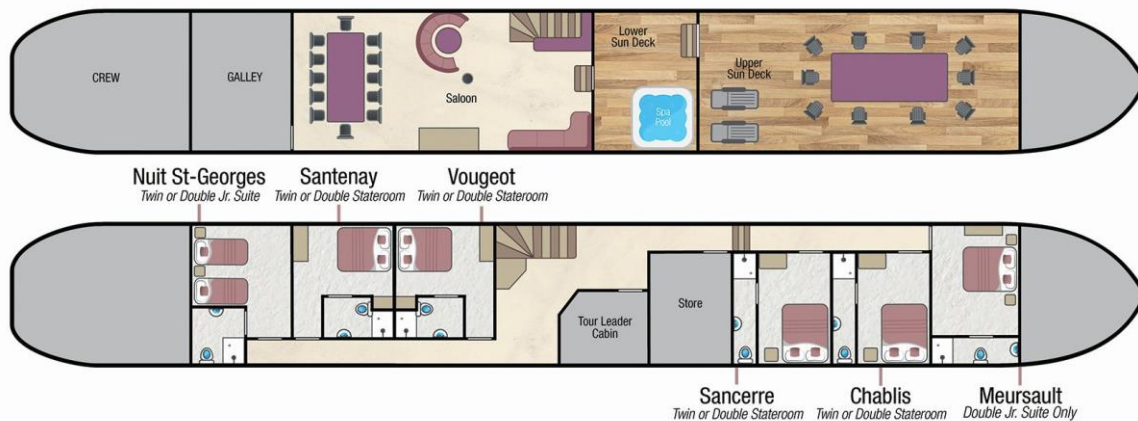
After breakfast, guests are transferred to Paris.

Themed Cruises Available:

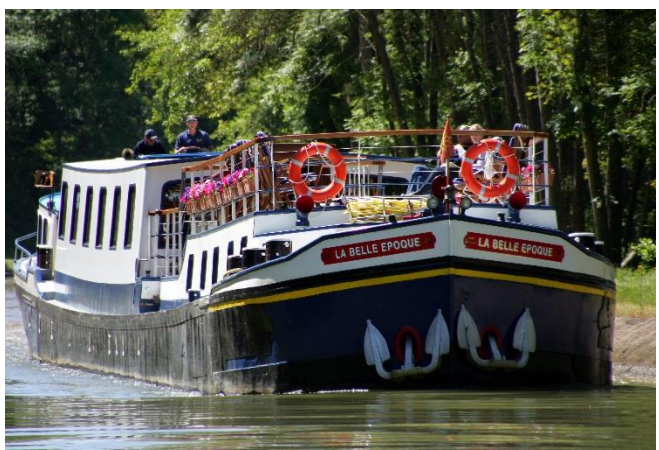
- Family
- Walking
- Biking
- Wine Appreciation



La Belle Epoque - Fact Sheet



Barge Specifics



Former purpose: Ex Freight Barge carrying logs from Burgundy to Paris and Amsterdam
 Year of construction: 1930
 Dimensions: 126ft (38.4m) x 16ft 6ins (5m)
 Year converted into a hotel barge: 1995
 Generators: 2 x 220 volt generators (silent night) for air-conditioning and heating & silent inverter
 Main Engine: 150 HP M.A.N
 Maximum Speed: 10 knots
 Water & fuel capacity: 12 tons of water & 3 tons of fuel

Your crew on board

Crew of 6: Pilot, Tour Guide, Chef, Deckhand & 2 Hostesses
 Our crew are European and speak English

Accommodation on board

Maximum 12 passengers / 2 Junior Suites & 4 Staterooms

2 Junior Suites - one at the bow (Meursault) with a fixed small double bed only and one at the stern (Nuits St-Georges) which can be twin beds or a double bed.

Meursault has 1 window and 2 portholes in the cabin and 1 porthole in the bathroom.

4 Staterooms (Santenay, Vougeot, Sancerre & Chablis) which can be configured as twin or a double bed.

Sancerre & Chablis have 2 large windows in the cabin and 1 window in the bathroom.

Santenay, Vougeot & Nuits-St-Georges have 3 portholes in the cabin.

All portholes must be closed when cruising.

All cabins have an en-suite shower room with shower cubicle, tiled floors and walls, W.C and hand basin. Washing gel, hand soap, shampoo, towels, robes, slippers and hair dryer are all supplied.

Cabin Sizes

Nuits St Georges - Junior Suite (stern) 165ft² (15.3m²)
 Meursault - Junior Suite (bow) 150ft² (13.9m²)
 Santenay & Vougeot - Staterooms (Mid stern) 130ft² (12m²)
 Chablis & Sancerre - Staterooms (Mid bow) 111ft² (10.35m²)
 En-suite shower rooms are included in the cabin sizes above.

Ceiling heights:

Meursault Junior Suite is 7ft (2.1m)
 All other cabins are approximately 6ft 2" (1.90m)

Size of the beds:

Chablis, Sancerre, Santenay, Vougeot & Nuits St George as:
 Twin bed - 3ft x 6ft (0.9m x 1.83m)
 Double bed - 6ft² (1.83m²)
 Meursault: Small Double bed only 6ft x 5ft (1.83m x 1.52m)

All sizes are approximate

Climate Control

Each cabin has Air Conditioning and Central Heating.

Computer and Telephone

Complimentary Wi-Fi is available on board for guests bringing their own appliances. Connectivity can be limited in remote locations.

There is no passenger telephone on La Belle Epoque.

Currency

The local currency in France is the Euro.
We are unable to accept credit or debit cards on board.

Cycling & Walking

You are welcome to walk or cycle using the on-board bicycles as often as you wish. Most guests choose to disembark the barge at a lock and visit local villages, returning to the canal and meeting the barge a little further along. The barge travels at a slow speed therefore catching up is not a problem.

There are 12, 6 gear bikes – helmets are provided. Children's bikes and child bike seats can be arranged if required. Please contact our Reservations team at least 8 weeks prior to your departure.

Dining Room & Saloon

The Saloon is 25ft x 13ft (7.6m x 3.9m) and is furnished with two built-in sofa areas, a coffee table and a fully stocked bar made of mahogany. There is a matching mahogany dining table seating up to 12 passengers. The saloon also has an antique barograph and gramophone. There is an antique interlock telephone exchange board which stands in the passageway to the cabins and dates from 1913.

La Belle Epoque is tastefully wallpapered and panelled in teak with brass fittings and has carpets throughout.

The saloon height is 6ft 8" 9 (2m).

Electricity

The barge is wired for 220 and 240 volts (the socket in the bathrooms is 110 volts). We suggest you bring an adapter for your particular appliance, which corresponds to the standard French two-pin plugs. If you wish to use your electrical appliance on board, please speak to a crew member on arrival to ensure it is suitable for the barge's electrical system.

European Waterways cannot be held responsible for unforeseen voltage fluctuations which sometimes occur when swapping from one voltage system to another.

Excursions

La Belle Epoque has 2 vehicles for excursions and transfers. A 9-seater long wheelbase Mercedes Sprinter and a 7-seater Mercedes Vito. Both vehicles are air-conditioned and the seating capacity detailed includes a driver in each.

For charter bookings, the itinerary can be adapted to suit your group's particular needs. If a destination or excursion is within a reasonable distance of the barge, we will do everything we can to arrange it. Please speak with our Reservations team in advance of your cruise and we can pre-arrange with the Captain.

Any guests not wishing to participate in an excursion are welcome to remain on the barge.

Facilities on board

- 6 person Spa pool (hot tub)
- 12 Bicycles (See Cycling & Walking)
- A small library of books and maps
- A collection of board games
- Wi-Fi internet access is available for passengers bringing their own appliances. This is subject to availability in some remote areas.
- USB ports fitted in all cabins
- Nordic walking sticks (on request)
- Hi-Fi System with CD player, radio and iPod docking station.
- There is a selection of CDs on board.

Food & Drink

All meals on board are freshly prepared by your chef and most meals are a set-menu (there is no choice available). French and international cuisine is featured.

We are able to arrange special meals, e.g. vegetarian / no fish / vegan etc, and we are able to cater for any preferences or allergies. However, it is most important that we are notified of any specific requirements at least 8 weeks prior to your departure date. Failure to notify European Waterways in advance of your cruise may result in disappointment on board.

There is no assigned seating for meals and the dining room on board La Belle Epoque accommodates all guests at a single sitting.

Breakfast: Your day on La Belle Epoque starts with a wholesome and balanced variety of breakfast foods, along with oven-warm breads & pastries, freshly-squeezed orange juice and hot beverages.

Lunch is a discovery of delectable regional specialities, in the chef's fashion, served in a relaxed but refined style accompanied with a selection of quality wines chosen by the chef.

Dinner: Always a gastronomic adventure created by your talented chef. A taste of regional cuisine by candlelight, complemented by fine wines, followed by a selection of regional cheeses, coffee and liqueurs.

Captain's farewell dinner is held on the last night of your cruise. Guests may choose to dress slightly more formal.

Drinks included in the cruise price: Non-alcoholic beverages and regular or decaffeinated tea and coffee, whole or low fat milk, are offered with all meals. The well-stocked bar is open 24 hours, which includes wines, spirits, beers & soft drinks. All wines are provided with meals and there is a Champagne welcome on arrival.

Drinks not included in the cruise price: Some Champagnes and special vintage wines are not included, although you may purchase bottles at cost price if you notify us in advance of your departure - please speak to our reservation team. We do not recommend special ordering unless you are chartering the whole barge.

Hot Air Ballooning

Once on board, the Captain can arrange this directly with the hot air balloon company on your behalf. Flights usually last between 1 and 1½ hours and are weather dependent. The cost is approximately 250 Euros per person. You will need to contract and pay the balloon company directly on the day of the flight (they do accept credit cards).

Kindly advise our Reservations team in advance if you are interested in ballooning. The main balloon operators we work with are Air Escargot www.air-escargot.com and France Montgolfieres www.franceballoons.com

Laundry

We recommend you bring sufficient clean clothing for your cruise as there are no laundry facilities on board. However, the crew may be able to assist in an emergency on a request basis.

Luggage / What to pack

Please try and fit everything for your cruise into one reasonably sized suitcase per person. Soft bags are preferable. There is only enough space on the barge for up to 12 suitcases and 12 pieces of hand luggage.

Practical comfort and casual clothing is the norm aboard La Belle Epoque and for most excursions. The dress code for dinner is relaxed and informal. For the Captain's Farewell Dinner on the final evening, guests often dress-up, which is optional.

The weather in France is generally warm. June, July, and August is the warmest often being in the mid 30's.

Suggested things to pack:

- Light clothing including shorts and T-shirts. A sweater or lightweight jacket is recommended for evenings and the air-conditioned interiors.
- During spring and autumn, you may need medium weight clothing. A lightweight raincoat for showery times would be advisable.
- In summer, a sun hat can be useful.
- Comfortable walking shoes with textured non-slip soles are recommended.
- La Belle Epoque has a spa pool so don't forget your swim wear. Towels are provided.

Medical

Please let us know in advance of your cruise if you require frequent or ongoing medical attention.

The crew are unable to administer medicines but can accompany you to a pharmacy for you to purchase any necessary medicines. Due to your cruise often being in a rural location, we recommend you bring all necessary medication with you.

Doctors are usually not far away for an urgent consultation and the Emergency Services can be called if required.

Problem during your Cruise

If you have a problem during your cruise, please give us the immediate opportunity to make things right. Please bring any concern to the private attention of your Captain who will often be able to solve any issue immediately.

Restricted Mobility

Please let us know in advance of your cruise if you have a physical disability and require any assistance.

La Belle Epoque has a gangplank from the bank to the barge with 2 handrails and there are 3 wide steps between the Deck and the Saloon. There are 11 steps from the Saloon to the lower deck and the cabins, this stair-case has a handrail and the stairs are wide enough for 2 people to walk side-by-side for assistance if required.

There are 3 steps from the lower sun-deck where the Jacuzzi is located to the upper sun-deck where the chairs and outdoor table are positioned.

From the cabin deck, there are 4 steps in the corridor to access cabins Sancerre, Chablis and Mersault.

Wheelchairs cannot be used on-board and can only be used to assist on excursions, however many visits encounter cobbled streets or rough ground which may hinder wheelchair access.

If you would like to hire a wheelchair to be available for your arrival, please notify our Reservations Team at least 8 weeks before departure. The small hire charge should be paid directly to the barge Captain on arrival and is approximately 100 Euros.

Safety and Security

Once you are on board, your Captain will talk you through the Cruise Safety Procedures. Safety Instructions are detailed on the last page of this document.

Please note that European Waterways cannot be responsible for any valuables that you bring on board. We strongly recommend that you do not bring valuables with you unless required and that you ensure that all valuables are covered by your travel insurance.

Safes are provided in each cabin on board but cabin doors are not usually locked, for safety reasons.

Smoking

We have a strict non-smoking policy for safety reasons and for the comfort of your fellow passengers.

If you would like to smoke we request that you do so outside or on the deck away from fellow passengers.

Sundecks

There are 2 sundecks. The first is 12ft 6" x 9ft 6" (3.8m x 2.9m) and the second is 12ft 6" x 35ft (3.8m x 10.6m) and there is a heated Spa pool (hot tub) for up to 6 passengers.

There 8 reclining chairs and a large table for al-fresco dining which can be covered by a wide parasol.

Themed Cruises

Wine Appreciation, Walking and Family cruise itineraries are available for charter groups, please contact our Reservations Team for more details. Special interest cruises often have a supplement and further details can be found at www.europeanwaterways.com

Tipping

Gratuities are not included in the cruise fare. Tipping is entirely discretionary but is greatly appreciated by the crew if you are fully satisfied with the level of service on board. As a guideline, the average tip given by our guests from around the world is approximately 5% of the Cruise Fare.

The usual way to give the tip is to give the amount in cash as one lump sum to the Captain / Cruise Director on the last day of the cruise. They will distribute the amount equally amongst the crew.

Euros or Dollars are equally appreciated. ATMs are accessible for cash withdrawal on most itineraries during the cruise and the crew can advise where these are located.

Transfers

For details of the La Belle Epoque vehicles, please see "Excursions". The approximate transfer duration between Paris & La Belle Epoque is 2 hours & 30 minutes.

Water

Tap water in France and on board La Belle Epoque is potable and bottled water is available.

Safety Instructions on La Belle Epoque

On arrival the Captain will talk you through the Cruise Safety Procedures on board.

In addition, it is important that all passengers are familiar with the safety instructions detailed below.

- Please follow the instructions of the Captain and crew at all times.
- Remember that decks can be slippery. Please wear non-slip shoes and do not run or jump whilst on board.
- Do not walk on the side or rear decks or outside the guard rails.
- Passengers are not permitted in the engine rooms, technical areas or crew accommodation at any time, or in the galley or wheelhouse unless accompanied by a crew member.
- Do not embark or disembark the barge unless the gangplank and handrail are in place or the crew have advised that it is safe to do so. Never do so when the barge is moving.
- Be careful when the vessel is being moored up with the barge ropes. In particular do not step into a loop in the rope or try to release the mooring rope from a bollard.
- Keep clear of any overhead obstructions and remain seated if on deck whilst the barge passes under bridges with restricted headroom.
- Do not attempt to touch the sides of any lock or bridge.
- Do not open lower deck portholes whilst the barge is moving.
- Life jacket preservers are located in designated lockers in your cabin or in designated deck lockers. Once on board, please take the time to identify their location and read the instructions.
- For fire safety reasons, smoking is not permitted anywhere inside the barge.
- The barge's equipment such as the hot tub and bicycles must only be used following preparation by the crew. Use of the bicycles and the hot tub is at your own risk. Breakable glasses are not permitted in the hot tub and alcohol consumption is not advised.
- There is an open bar policy on board. However, excessive alcohol consumption can be dangerous, particularly in a warm climate and in proximity to deep water and the Captain has the discretion to withhold alcohol if safety to passengers or crew is at risk.

In an emergency

- Keep calm. Do not return to your cabin to recover your possessions.
- If you discover a fire on board, sound the fire alarm and notify a crew member immediately. If possible, close doors behind you to confine the fire. Please take the time to identify the location of fire alarms and fire extinguishers.
- If the alarm sounds or you hear repeated continuous blasts on the barge horn, you must, if possible, assemble on the sundeck for further instructions.
- If you discover water below deck, notify a crew member immediately and go to the sundeck to await further instructions.
- If you are in your cabin and the way to the sundeck is obstructed, follow the signs to the alternative fire exit. Please take the time to identify all fire exits.
- The emergency number for fire, police or medical assistance on all public phone networks is 112.

Please ask a member of the crew on board if you require any further safety advice