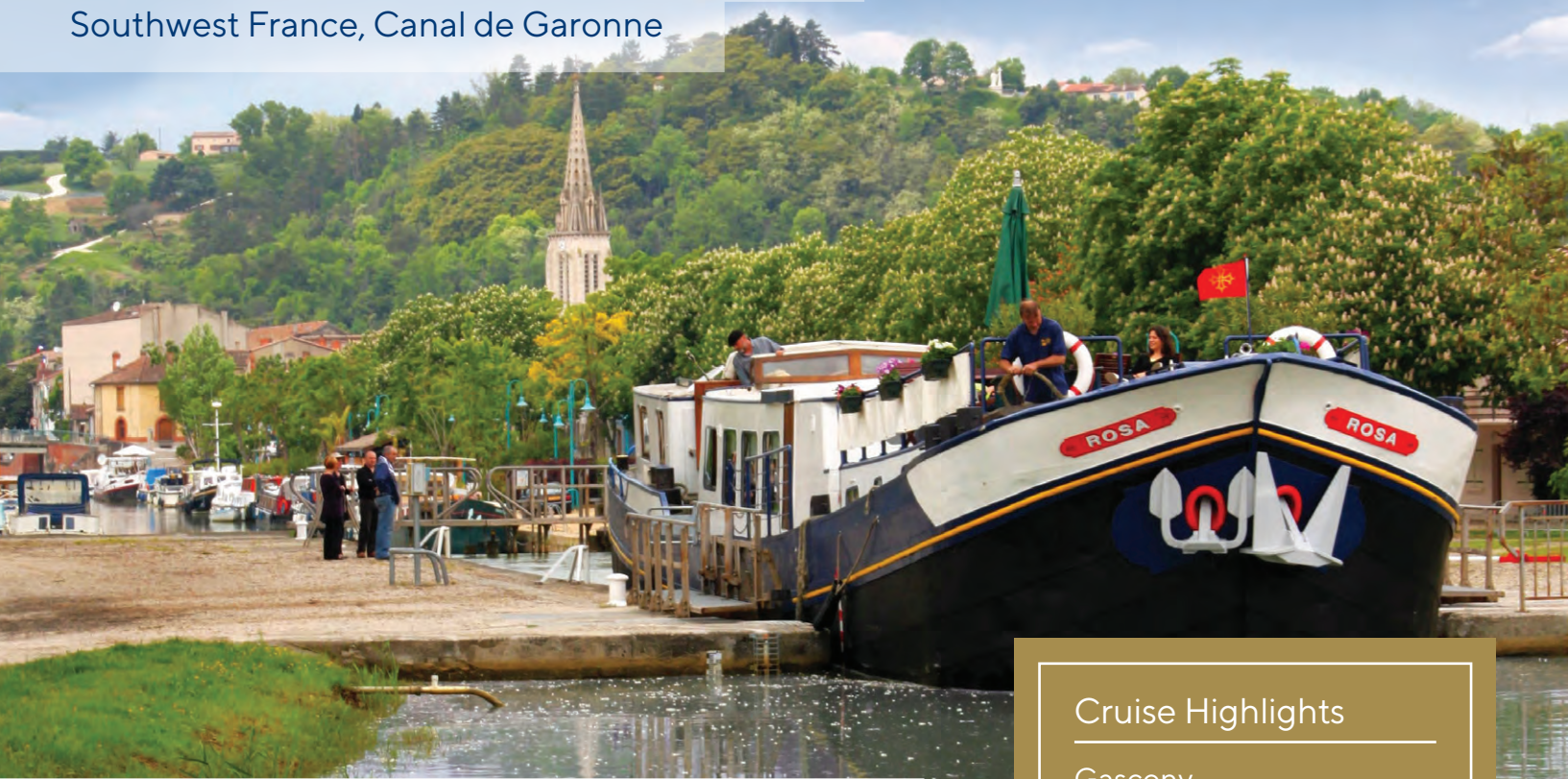


Gascony & Bordeaux

Southwest France, Canal de Garonne



Rosa: 🏠 First Class | 👥 8 Passengers | 🍷 4 Crew

Rosa is an old Dutch "Clipper" barge that was built early in the last century to carry cargo on the offshore waterways of Holland. Now, as a charming hotel barge, she navigates the much calmer canals of southwest France.

The pretty, wood-panelled saloon has comfortable seating, a dining area and bar, and the four cosy, air-conditioned staterooms have full en suite facilities. Outside there is a spacious sun deck with parasols and comfortable loungers to relax in. Rosa also featured with Anjodi in the successful television series, Rick Stein's French Odyssey and you will be able to enjoy your own personal 'odyssey' through this captivating part of southwest France.

Gascony

Initially part of the historic dukedom of Gascony, this region is famed for its outstanding pastoral vistas and rich culinary traditions. Expect quaint farms, villages untouched by time and a spectacular palette of tastes, scents and colours.

Bordeaux

The Bordeaux region with its "special terroir", has been producing astonishing wine for around 2,000 years, though it may just be the stunning châteaux, eclectic markets or artistic past-times that you fall in love with.

Typical Cuisine Aboard

Gastronomy

Entrecôte de Bazas à la Bordelaise; Confit de Canard et Son Jus au Thym; Filet de Truite au Beurre Blanc; Pruneaux à l'Armagnac; Gâteau Basque

Wine Cellar

Château Roquetaillade Le Bernet, Graves; Baron d'Ardeuil, Buzet; Domaine Lussac, Château Lyonnat, Lussac - Saint Émilion; Château Cheval Noir, Saint Émilion Grand Cru

Cheese Board

Le Bleu de Quercy; Templais Sec; Tomme de Lomagne; Cabécou; Roquefort; Laguiole; Chaource; Fourme d'Ambret; Crèmeux

Cruise Highlights

Gascony

- Visit the renowned Château Bellevue la Forêt for a winery tour and private tasting
- Visit to Château de Goudourville
- Guided tour and private tasting at a renowned local Armagnac producer
- Visit Moissac and its UNESCO-classified abbey

Bordeaux

- Tour of the famous Saint Émilion
- Visit the impressive Château de Duras
- Cruise across the 1,900 foot Agen aqueduct
- Wine, cheese and Armagnac tastings

ITINERARY

Gascony - Montauban to Boé

Day 1 Montauban

Guests are met in Toulouse and transferred by private chauffeured minibus to Rosa where a champagne welcome awaits them. Dinner on board.

Day 2 Montauban to Montech

This morning Rosa meanders up a flight of nine locks to moor in the little town of Montech. In the afternoon we head into the Côtes du Frontonnais wine region for a tasting at the renowned Château Bellevue la Fôret. Dinner on board.

Day 3 Montech to Castelsarrasin

After breakfast, there is a guided tour of the inclined Water Plane, an amazing feat of engineering that by-passes five locks. Then, following a morning cruise to Castelsarrasin, we take a short drive to the Abbaye de Belleperche, where we see a fascinating exhibition. Dinner on board.

Day 4 Castelsarrasin to Moissac

This morning we cross the River Tarn via the 1,000 foot long aqueduct and descend towards our mooring at Moissac. After lunch we cruise to St. Livrade for an optional afternoon's swimming or canoeing, and visit the UNESCO-classified 7th century Abbaye St-Pierre de Moissac. Dinner ashore at 'Le Florentin' restaurant.

Day 5 Moissac to Pommevic

This morning we visit Castelsarrasin's market before cruising through Moissac and across the swing bridge to our mooring at Pommevic. After lunch, we visit the 11th century Château de Goudourville before a drive to Auvillar, a 15th century village atop a gorge above the River Garonne. We then visit Valence d'Agen and enjoy a tour of this old "Bastide" town. Dinner on board.

Day 6 Pommevic to Boé

A morning cruise through the bucolic countryside to our final mooring at Boé. After lunch, we visit Domaine de Lapeyrade for a tour and private tastings of their Armagnac and Floc du Gascogne wines before visiting the medieval town of Nérac and its castle, once home to Henry IV of France. Captain's Farewell Dinner on board.

Day 7 Boé

After breakfast, guests are transferred by private chauffeured minibus to their choice of location in Toulouse.



Saint-Émilion



Stateroom



Château de Goudourville



Bordeaux - Castets-en-Dorthe to Boé

Day 1 Castets-en-Dorthe

Guests are met in Bordeaux and transferred by private chauffeured minibus to Rosa where a champagne welcome awaits you.

Day 2 Castets-en-Dorthe to Meilhan-sur-Garonne

This morning we cruise to the port of Meilhan-sur-Garonne. In the afternoon, we visit the UNESCO World Heritage site of Saint-Émilion, famous for its Bordeaux appellations. Later, we stop at Château Beau-Séjour-Bécot, producer of premier and grand crus wines, where we enjoy a tasting. Dinner on board.

Day 3 Meilhan-sur-Garonne to Le Mas d'Agenais

This morning we enjoy the colourful market of Casteljaloux. Afterwards, we cruise to the village of Le Mas d'Agenais which we visit, along with a cheese workshop, where you can enjoy a tour and sumptuous tasting of goats' cheeses. Dinner on board.

Day 4 Le Mas d'Agenais to Buzet-sur-Baise

This morning, we visit the Château de Duras before cruising to Buzet-sur-Baise. In the evening, we visit the beautiful village of Barbaste before dinner ashore at 'Le Moulin des Saveurs'.

Day 5 Buzet-sur-Baise to Sérignac-sur-Garonne

In the morning, we visit the cork museum at Mezin. We then head to the 13th century bastide village of Vianne to see a skilled glassblower at work. This afternoon we cruise to our mooring at Sérignac-sur-Garonne. Dinner on board.

Day 6 Sérignac-sur-Garonne to Boé

We start the day with a visit to the medieval town of Nérac and the beautiful ruins of its 15th century château. We then stop at the Lapeyrade estate for a cellar tasting of Armagnac, the oldest alcohol in France. In the afternoon, we cruise to our mooring at Boé, crossing one of the longest aqueducts in France. Captain's Dinner on board.

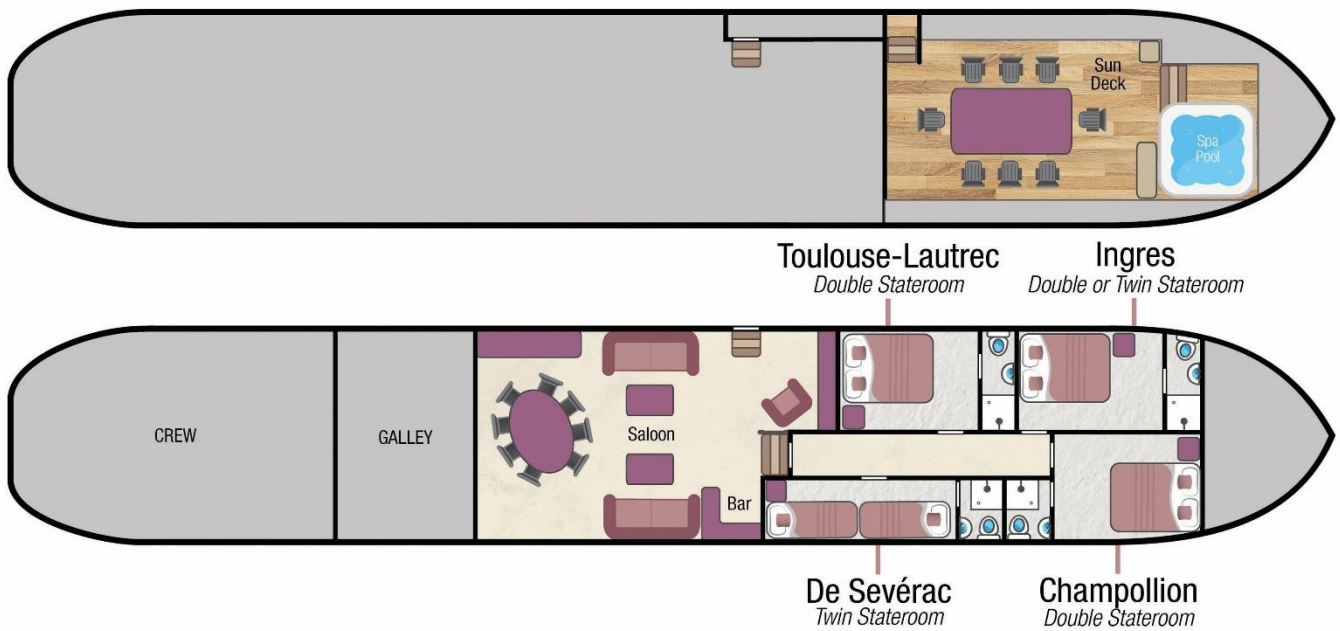
Day 7 Boé

After breakfast, guests are transferred by private chauffeured minibus to their choice of location in Bordeaux.

Themed Cruises Available:

- Wine Appreciation (Bordeaux)
- Golf (Gascony)

Rosa - Fact Sheet



Barge Specifics



Former purpose: Clipper, built in the Netherlands, formerly sailed the Dutch Seas
 Year of construction: 1907
 Dimensions: 98ft long x 16ft 4" wide (29.5m x 5m)
 Generators: 2 x 220 volts generators 9 Kw/h and 17 Kw/h
 Main Engine: Deutz SA6M512 120HP
 Maximum Speed: 4.3 Knots
 Water & fuel capacity: 5 tons of water and 3 tons of fuel

Your crew on board

Crew of 4: Captain, Guide, Chef & Housekeeper
 Nationality of Crew: The crew are mostly British and speak both English and French.

Accommodation on board

4 Staterooms: 1 twin bedded & 3 double bedded.

Bathrooms: Each stateroom has a stylish en-suite bathroom with shower, wash basin and WC. All are supplied with washing gel, hand soap, shampoo, towels, and hair dryer.

1 Window in each bathroom, that can be opened, but not during cruising.

Cabin Sizes

Jean-Francois Champollion (Bow): 8ft x 13ft (2.5m x 4m)
Jean-Dominique Ingres (Bow): 8ft x 11ft 5" (2.5m x 3.5m)
Deodat de Severac (Stern): 6ft 5" x 16ft 5" (2m x 5m)
Henri Toulouse-Lautrec (Stern): 10ft x 11ft 5" (3m x 3.5m)
 All bathrooms are en-suite and the measurements are included in the stateroom sizes detailed above.

All cabin sizes are approximate.

Size of the beds:

Jean-Francois Champollion, Jean-Dominique Ingres & Henri Toulouse-Lautrec each have a double bed 5ft 3" wide x 6ft 5" long (1.6m x 2m).

Jean-Dominique Ingres can be made up into either 2 single beds or one double bed, 5ft 3" wide x 6ft 5" long (1.6m x 2m)

Deodat de Severac has 2 single beds. Each bed is 2ft 9" wide x 6ft 5" long (84cm x 2m)

Ceiling Height:

The maximum height in Severac & Lautrec is 7ft 4" (2.25m)
 The maximum height in Ingres & Champollion is 8ft 2" (2.5m)

There are rectangular windows in the cabins, which can be opened, but not while cruising.

Climate Control

Each stateroom has individually controlled Air Conditioning and Central Heating.

Computer and Telephone

Complimentary Wi-Fi is available on board for guests bringing their own appliances. Connectivity can be limited in remote locations.

There is no passenger telephone on Rosa.

Currency

The local currency in France is the Euro.
We are unable to accept credit or debit cards on board.

Cycling & Walking

You are welcome to walk or cycle using the on board bicycles as often as you wish. Most guests choose to disembark the barge at a lock and visit local villages, returning to the canal and meeting the barge a little further along. The barge travels at a slow speed therefore catching up is not a problem.

There are 8 folding bikes with on board. Children's bikes, helmets & child bike seats can be arranged if required. Please contact our Reservations team at least 8 weeks prior to your departure.

Dining Room & Saloon

The tastefully furnished & airy saloon is 13ft x 26ft (3.9m x 7.8m) and the height is 7ft 4" (2.25m).

There are 2 sofas, one on either side of the barge, with a coffee table in-between. A fully stocked bar and fridge caters to all your beverage needs and the décor is enhanced with varnished wood and brass fittings. The dining table seats all 8 passengers at one sitting.

There are 3 steps from the saloon down to the cabin level.

Electricity

Rosa is equipped with both French 2-pin plugs and English 3-pin plugs and is wired for 220 and 240 volts (The bathrooms have 110v plugs for shaving). We suggest you bring adapters for your particular appliance, which correspond with English 3-pin plugs.

If you wish to use your electrical appliance on board, please ask one of the crew when you arrive on board to ensure that it is suitable to the barge's electrical system.

European Waterways cannot be held responsible for unforeseen voltage fluctuations which sometimes occur when swapping from one voltage system to another.

Excursions

The Rosa barge has a 9-seater (including driver) VW Caravelle minivan which is air-conditioned and used for transfers and excursions.

For charter bookings, the itinerary can be adapted to suit your group's particular needs. If a destination or excursion is within a reasonable distance of the barge, we will do everything we can to arrange it. Please speak with our Reservations team in advance of your cruise and we can pre-arrange with the Captain.

Any guests not wishing to participate in an excursion are welcome to remain on the barge.

Facilities on board

- 8 folding Bicycles (See Cycling & Walking)
- A small library of books and maps
- A collection of board games
- Saloon is equipped with 6 USB ports for fast charging
- Hi-Fi system with CD player with selection of CD's.
- Docking station to connect Guest iPods and iPhones to the Hi-Fi system
- Binoculars
- On-deck Spa-pool

Food & Drink

All meals on board are freshly prepared by your chef and most meals are a set-menu (there is no choice available). International and French cuisine is featured.

We are able to arrange special meals, e.g. vegetarian / no fish / vegan etc, and we are able to cater for any preferences or allergies. However, it is most important that we are notified of any specific requirements at least 8 weeks prior to your departure date. Failure to notify European Waterways in advance of your cruise may result in disappointment on board.

There is no assigned seating for meals and the dining table on board Rosa accommodates all guests at a single sitting.

Breakfast: Your day on Rosa starts with a wholesome and balanced variety of breakfast foods, along with oven-warm breads & pastries, freshly-squeezed orange juice and hot beverages.

Lunch is usually a selection of colourful salads, pates and cold meats accompanied by hot soup or entrée, delectable desserts and a different selection of regional cheeses accompanied by quality wines selected by the chef.

Dinner: Always a gastronomic adventure created by your talented chef. A taste of regional cuisine by candlelight, complemented by fine wines, followed by a selection of regional cheeses, coffee and liqueurs.

Captain's farewell dinner is held on the last night of your cruise. Guests may choose to dress slightly more formal.

Drinks included in the cruise price: Non-alcoholic beverages and regular or decaffeinated tea and coffee, whole or low fat milk, are offered with all meals. The well-stocked bar is open 24 hours, which includes wines, spirits, beers & soft drinks. All wines are provided with meals and there is a Champagne welcome on arrival.

Drinks not included in the cruise price: Some Champagnes (with the exception of the Captain's reception) and special vintage wines, however these can be purchased in advance of your cruise at cost price, please speak to our Reservation team. We do not recommend specific beverage orders unless you are chartering the whole barge.

Hot Air Ballooning

Once on board, the Captain can arrange this directly with the hot air balloon company. Flights last about 1 hour and are weather dependent. The cost is approximately 230 Euros per person and this should be paid directly to the balloon company on the day of the flight (they do accept credit cards). Please advise our Reservations team in advance if you are interested in ballooning.

The operating company is France Montgolfieres and their website is www.franceballoons.com

Laundry

We recommend you bring sufficient clean clothing for your cruise as there are no laundry facilities on board. However, the crew may be able to assist in an emergency on a request basis.

Luggage / What to pack

Space is limited on board so please try and fit everything for your cruise into one medium sized suitcase per person. Soft bags are preferable. There is only enough space on the barge for up to 8 suitcases and 8 pieces of hand luggage.

Practical comfort and casual clothing is the norm aboard Rosa and for most excursions. The dress code for dinner is relaxed and informal. For the Captain's Farewell Dinner on the final evening, guests often dress-up, which is optional.

The weather in Gascony / Bordeaux is generally warm. June, July, and August is the warmest often being in the mid 30's.

Suggested things to pack:

- Light clothing including shorts and T-shirts. A sweater or lightweight jacket is recommended for evenings and the air-conditioned interiors.
- During spring and autumn, you may need medium weight clothing. A lightweight raincoat for showery times would be advisable.
- In summer, a sun hat can be useful.

- Comfortable walking shoes with textured non-slip soles are recommended.
- There is a spa-pool on-deck, so please bring your swim-wear. Towels are provided.

Medical

Please let us know in advance of your cruise if you require frequent or ongoing medical attention.

The crew are unable to administer medicines but can accompany you to a chemist for you to purchase any necessary medicines. Due to your cruise often being in a rural location, we recommend you bring all necessary medication with you.

Doctors are usually not far away for an urgent consultation and the Emergency Services can be called if required.

Problem during your Cruise

If you have a problem during your cruise, please give us the immediate opportunity to make things right. Please bring any concern to the private attention of your Captain who will often be able to solve any issue immediately.

Restricted Mobility

Please let us know in advance of your cruise if you have a physical disability and require any assistance.

Rosa is accessed via a gangplank with rope handrails on each side. There are 4 steps between the gangplank and deck. There are a further 4 steps between the deck and saloon and 3 steps between the saloon and the cabin level. There are handrails inside the barge and the crew offer assistance if required.

Wheelchairs cannot be used on-board and can only be used to assist on excursions, however many visits encounter cobbled streets or rough ground which may hinder wheelchair access.

If you would like to hire a wheelchair to be available for your arrival, please notify our Reservations team at least 8 weeks before departure. The small hire charge should be paid directly to the barge Captain on arrival and is approximately 100 Euros.

Safety and Security

Once you are on board, your Captain will talk you through the Cruise Safety Procedures. Safety Instructions are detailed on the last page of this document.

Please note that European Waterways cannot be responsible for any valuables that you bring on board. We strongly recommend that you do not bring valuables with you unless required and that you ensure that all valuables are covered by your travel insurance.

Safes are provided in each cabin on board Rosa but cabin doors are not usually locked, for safety reasons.

Smoking

We have a strict non-smoking policy for safety reasons and for the comfort of your fellow passengers.

If you would like to smoke we request that you do so outside or on the deck away from other passengers.

Sundeck

The sundeck is 13ft x 26ft (3.9m x 7.8m) with a table and chairs for al fresco dining along with loungers. There are 4 large parasols measuring 3x2 m each offering complete shade when required. There is also an on-deck spa pool.

The deck table extends to seat more guests when required

Themed Cruises

Wine Appreciation, Golf, Cycling, Walking and Family cruise itineraries are available for charter groups, please contact our Reservations team for more details. Special interest cruises often have a supplement and further details can be found at www.europeanwaterways.com

Tipping

Gratuities are not included in the cruise fare. Tipping is entirely discretionary but is greatly appreciated by the crew if you are fully satisfied with the level of service on board. As a guideline, the average tip given by our guests from around the world is approximately 5% of the Cruise Fare.

The usual way to give the tip is to give the amount in cash as one lump sum to the Captain / Cruise Director on the last day of the cruise. They will distribute the amount equally amongst the crew.

Euros or Dollars are equally appreciated. ATMs are accessible for cash withdrawal on most itineraries during the cruise and the crew can advise where these are located.

Transfers

For details of the Rosa vehicle, please see "Excursions". The approximate transfer duration on all cruises is between 1 / 1.5 hours depending on the cruise route.

Water

Tap water in France and onboard Rosa is potable and bottled water is available.

Safety Instructions on Rosa

On arrival, the Captain will talk you through the Cruise Safety Procedures on board.

In addition, it is important that all passengers are familiar with the safety instructions detailed below.

- Please follow the instructions of the Captain and crew at all times.
- Remember that decks can be slippery. Please wear non-slip shoes and do not run or jump whilst on board.
- Do not walk on the side or rear decks or outside the guard rails.
- Passengers are not permitted in the engine rooms, technical areas or crew accommodation at any time, or in the galley or wheelhouse unless accompanied by a crew member.
- Do not embark or disembark the barge unless the gangplank and handrail are in place or the crew have advised that it is safe to do so. Never do so when the barge is moving.
- Be careful when the vessel is being moored up with the barge ropes. In particular do not step into a loop in the rope or try to release the mooring rope from a bollard.
- Keep clear of any overhead obstructions and remain seated if on deck whilst the barge passes under bridges with restricted headroom.
- Do not attempt to touch the sides of any lock or bridge.
- Do not open lower deck portholes whilst the barge is moving.
- Life jacket preservers are located in designated lockers in your cabin or in designated deck lockers. Once on board, please take the time to identify their location and read the instructions.
- For fire safety reasons, smoking is not permitted anywhere inside the barge.
- The barge's equipment such as the hot tub and bicycles must only be used following preparation by the crew. Use of the bicycles and the hot tub is at your own risk. Breakable glasses are not permitted in the hot tub and alcohol consumption is not advised.
- There is an open bar policy on board. However, excessive alcohol consumption can be dangerous, particularly in a warm climate and in proximity to deep water and the Captain has the discretion to withhold alcohol if safety to passengers or crew is at risk.

In an emergency

- Keep calm. Do not return to your cabin to recover your possessions.
- If you discover a fire on board, sound the fire alarm and notify a crew member immediately. If possible, close doors behind you to confine the fire. Please take the time to identify the location of fire alarms and fire extinguishers.
- If the alarm sounds or you hear repeated continuous blasts on the barge horn, you must, if possible, assemble on the sundeck for further instructions.
- If you discover water below deck, notify a crew member immediately and go to the sundeck to await further instructions.
- If you are in your cabin and the way to the sundeck is obstructed, follow the signs to the alternative fire exit. Please take the time to identify all fire exits.
- The emergency number for fire, police or medical assistance on all public phone networks is 112.

Please ask a member of the crew on board if you require any further safety advice