

Kir Royale

The River Marne and Canal Latéral à la Marne



Kir Royale: 🏠 Ultra Deluxe | 👥 8 Passengers | 🍷 5 Crew

Kir Royale, the latest addition to our fleet, has a fascinating history. Converted to a beach landing craft in World War Two, she was sunk before being refloated and eventually transformed into a hotel barge. She now cruises the beautiful region of Champagne with its plethora of vineyards stretching across the rolling hillsides as far as the eye can see. There will be plenty of opportunities to sample the sparkling wine to which the region has given its name with private tastings at renowned champagne houses.

Her saloon is spacious and airy and has been the subject of a complete refit with bespoke furniture and a bar, piano and separate dining area. The four generous and individually decorated suites are each over 200 sq ft in area and are also newly renovated. They have ultra-modern en suite bathrooms with his and hers sinks, and a luxurious oversized rainforest shower.

Outside, there is a cosy forward sun deck where you can relax on a sun lounger or unwind in the heated spa pool. There is also a large and sheltered aft sun deck with covered dining area and additional sun loungers, plus an upper observation deck for a panoramic view.

Imbued with an air of style and elegance, Kir Royale is a great choice for discovering Champagne – whether you're cruising alongside the rolling vineyards, or perhaps on a private tour, savouring the wines, history and culture of this famous region.

La Nouvelle Etoile (see page 102) also cruises in Champagne in early summer.

Cruise Highlights

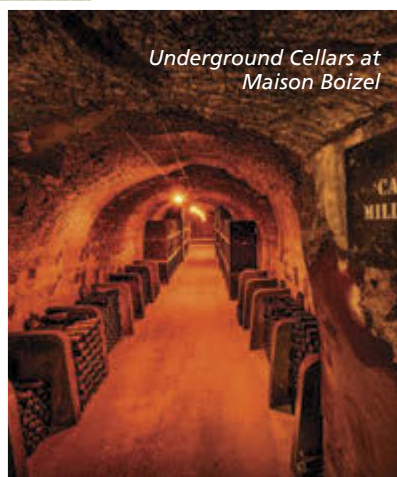
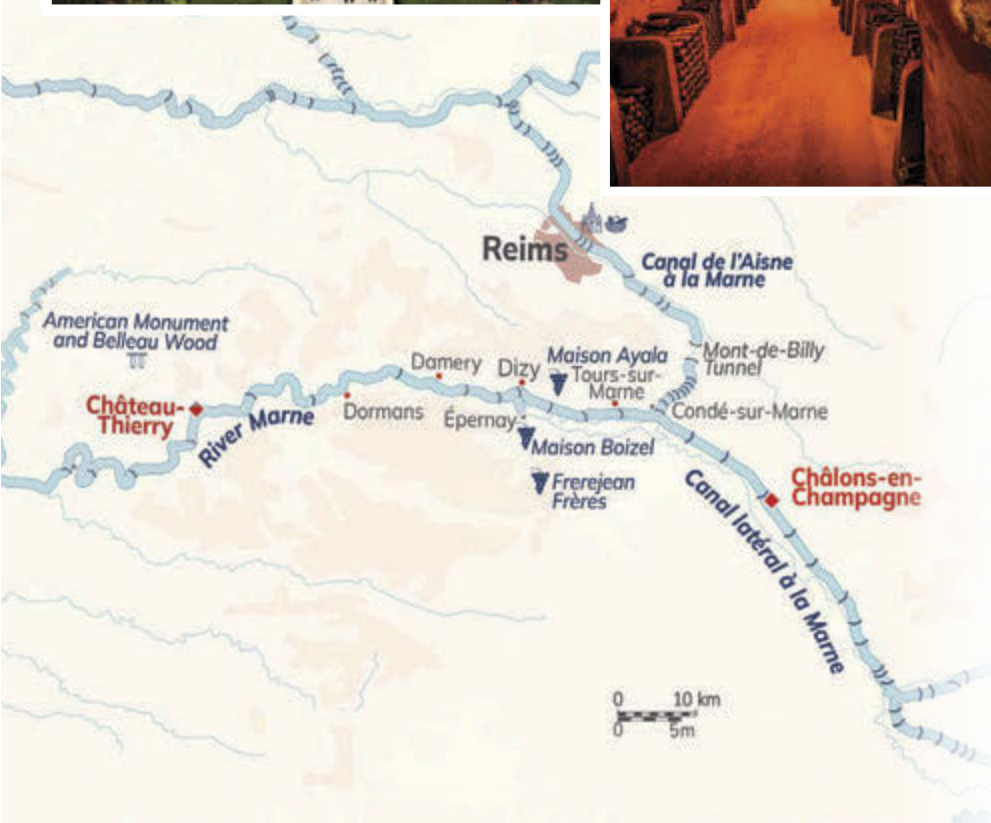
- Private tour and tasting at Maison Boizel on the iconic Avenue de Champagne
- Tour the majestic cathedral in Reims, where the Kings of France were once crowned
- Visit the boutique champagne house of Frerejean Frères and enjoy private lunch in the family domaine
- Enjoy a private winery tour and tasting at Maison Ayala, in the Grand Cru village of Aÿ
- Cruise the pretty River Marne past waterside vineyards
- Visit Château-Thierry, the scene of fierce battles in World War One, and Belleau Wood



Suite



Al Fresco Dining

American Cemetery
at Belleau WoodUnderground Cellars at
Maison Boizel

ITINERARY

Château-Thierry to Châlons-en-Champagne

Day 1 Château-Thierry

Guests are met at the Hotel Westminster in Paris and transferred by private chauffeured minibus to Kir Royale where a champagne welcome awaits them. Dinner on board.

Day 2 Château-Thierry to Dormans

This morning, we set off on our first voyage along the meandering River Marne and cruise to the pretty riverside town of Dormans, the site of a château, water mill and World War One memorial. After lunch on board, we visit the renowned champagne house of Maison Ayala, situated in the grand cru village of Aÿ, for a private tasting. Dinner on board.

Day 3 Dormans to Damery

This morning, we visit the World War One battlefield and monument at Château-Thierry and the American cemetery at Belleau Wood. After returning to the barge and lunch on board, we enjoy a relaxing afternoon cruise along the Marne to our mooring at Damery. Dinner on board.

Day 4 Damery to Dizy

After a leisurely breakfast, we head off for a private champagne tasting and tour at the boutique grand cru winery of Frerejean Frères with a stop en route at a hillside vineyard to learn some of the key attributes of champagne grape growing. After the tasting we enjoy a gourmet private lunch in the salon of the family domaine. Return to the barge to continue our cruise along the Canal latéral à la Marne to Dizy. Dinner on board.

Day 5 Dizy to Tours-sur-Marne

This morning, we visit the prestigious Maison Boizel on the iconic Avenue de Champagne. Explore the UNESCO-listed underground cellars for the 'family treasure' featuring bottles dating back to 1834. Afterwards, enjoy a private tasting of two exclusive champagnes. An optional visit to the Musée du Champagne awaits before lunch on board. This afternoon, we'll cruise to the pretty Tours-sur-Marne. Dinner on board.

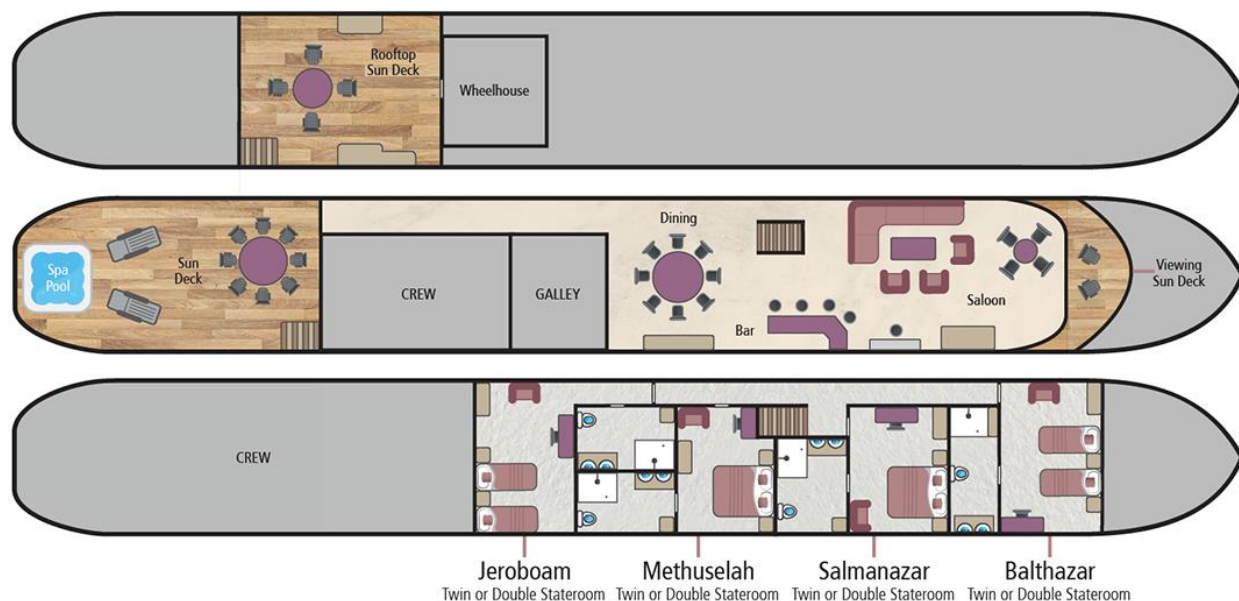
Day 6 Tours-sur-Marne to Châlons-en-Champagne

This morning, we visit the magnificent 800-year-old Reims cathedral, a Gothic masterpiece where the Kings of France were crowned, before some free time perhaps to wander around this delightful city with its grand squares and elegant shopping arcades. After lunch on board, we cruise to our final mooring at Châlons-en-Champagne. Captain's Farewell Dinner on board.

Day 7 Châlons-en-Champagne

After breakfast, guests are transferred by private chauffeured minibus to Paris.

Kir Royale - Fact Sheet



Barge Specifics



Former purpose:	Ex French cargo carrier
Year of construction:	1930
Dimensions:	128ft (39m) x 16ft 6" (5.1m)
Year converted into a hotel barge:	1976
Barge completely refurbished:	2023
Generators:	2 x 220 volt generators
Main engine:	DAF 185 HP
Maximum speed:	10 knots
Water & fuel capacity:	8.8 tons of water & 5 tons of fuel

Your crew on board

Crew of 5:	Captain/Pilot, Tour Guide/ Deckhand, Chef, Housekeeper & Host/ess.
Nationality of crew:	Mainly British, speaking both English & French.

Accommodation on board

Maximum 8 passengers / 4 suites

All suites can be configured with either 2 single beds or 1 king-size bed.

Each Suite has a large & stylish en-suite bathroom with shower, his and her wash basins and WC. The bathrooms have fully tiled floors and walls. All are supplied with washing gel, hand soap, shampoo, towels, bathrobes, slippers and hair dryer.

There are portholes in each of the suites. They can be opened, but not while cruising.

Guest washroom on saloon level.

Cabin Sizes

Jeroboam Suite (stern) precise measurements to follow but equating to approx. 230 ft² including ensuite. Jeroboam has 3 portholes in the cabin and no porthole in the bathroom.

Methuselah Suite (mid) equating to approx. 190 ft² including ensuite. Methuselah has 1 porthole in the cabin and 1 porthole in the bathroom.

Salmanazar Suite (mid) equating to approx. 200 ft² including ensuite. Salmanazar has 1 porthole in the cabin and 1 porthole in the bathroom.

Balthazar Suite (bow) equating to approx. 220 ft² including ensuite.

Balthazar has 2 portholes in the cabin and 1 porthole in the bathroom.

Bathrooms: are en-suite. The bathroom measurements are included in the suite sizes detailed above.

Ceiling height: 1.95-1.98m

All sizes are approximate.

Size of the beds:

As singles the beds are 0.9m x 2m

As king beds 1.8m x 2m

Climate Control

Each Suite has individually controlled Air Conditioning and Central Heating.

Computer and Telephone

Complimentary Wi-Fi is available on board for guests bringing their own appliances. Connectivity can be limited in remote locations.

There is no passenger telephone on Kir Royale.

Currency

The local currency in France is the Euro.

We are unable to accept credit or debit cards on board.

Cycling & Walking

You are welcome to walk or cycle using the on-board bicycles as often as you wish. Most guests choose to disembark the barge at a lock and visit local villages, returning to the canal and meeting the barge a little further along. The barge travels at a slow speed therefore catching up is not a problem. Our Biking Plus program offers circular routes to follow.

Dining Room & Saloon

The Saloon is a wonderful place to relax. It is very spacious, light & airy, and has been the subject of a complete refit with bespoke furniture. There is a fully stocked bar which is open 24/7, a piano and a separate dining area with table seating 8 guests.

There are 11 steps from the saloon down to the cabin level.

Electricity

The barge is wired for 220 and 240 volts but not 110 volts. We suggest you bring an adapter for your particular

appliance, which corresponds to the standard French two-pin plugs. If you wish to use your electrical appliance on board, please speak to a crew member on arrival to ensure it is suitable for the barge's electrical system.

European Waterways cannot be held responsible for unforeseen voltage fluctuations which sometimes occur when swapping from one voltage system to another.

Excursions

The Kir Royale barge minibus is a 9-seater (including driver) air-conditioned long wheelbase Mercedes Sprinter. It is used for transfers and excursions during your cruise.

For charter bookings, the itinerary can be adapted to suit your group's particular needs. If a destination or excursion is within a reasonable distance of the barge, we will do everything we can to arrange it. Please speak with our Reservations team in advance of your cruise and we can pre-arrange with the Captain.

Any guests not wishing to participate in an excursion are welcome to remain on the barge.

Facilities on board

- 5 person spa pool (hot tub)
- 8 Bicycles (See Cycling & Walking)
- A small library of books and maps
- A collection of board games
- Fishing rods
- Nordic walking sticks (on request)
- Bose Hi-fi system with an iPod docking station and radio. There is a selection of CDs.
- Guest devices can be connected to the Hi-Fi system
- TV/DVD player in the saloon

Food & Drink

All meals on board are freshly prepared by your chef and most meals are a set-menu (there is no choice available). International & regional French cuisine is served

We are able to arrange special meals, e.g. vegetarian / no fish / vegan etc, and we are able to cater for any preferences or allergies. However, it is most important that we are notified of any specific requirements at least 8 weeks prior to your departure date. Failure to notify European Waterways in advance of your cruise may result in disappointment on board.

There is no assigned seating for meals and the dining room on board Kir Royale accommodates all guests at a single sitting.

Breakfast: Your day on Kir Royale starts with a wholesome and balanced variety of breakfast foods, along with fresh breads & pastries, freshly-squeezed orange juice and hot beverages.

Lunch: is usually a casual meal, bistro style, with refreshing salads or soups depending on the season, followed by local specialities and a selection of cheese or dessert, and accompanied by a selection of quality wines. Occasionally a buffet meal or a picnic will be proposed as an alternative.

Dinner: Always a gastronomic adventure created by your talented chef. A taste of regional cuisine by candlelight, complemented by fine wines, followed by a selection of regional cheeses, coffee and liqueurs.

Captain's farewell dinner is held on the last night of your cruise. Guests may choose to dress slightly more formal.

Drinks included in the cruise price: Non-alcoholic beverages and regular or decaffeinated tea and coffee, whole or low fat milk, are offered with all meals. The well-stocked bar is open 24 hours, which includes wines, spirits, beers & soft drinks. All wines are provided with meals and there is a Champagne welcome on arrival.

Drinks not included in the cruise price: Some Champagnes (with the exception of the Captain's reception) and special vintage wines, however these can be purchased in advance of your cruise at cost price – please speak to our reservation team. We do not recommend specific beverage orders unless you are chartering the whole barge.

Hot Air Ballooning

Please contact our reservations team well in advance of your cruise if you wish to book, this is a popular activity and it is often too late to book during the week of your cruise.

Flights usually last between 1 and 1½ hours and are weather dependent. The cost is approximately 250 Euros per person. You will need to contract and pay the balloon company directly on the day of the flight (they do accept credit cards).

Laundry

We recommend you bring sufficient clean clothing for your cruise as there are no laundry facilities on board. However, the crew may be able to assist in an emergency on a request basis.

Luggage / What to pack

Please try and fit everything for your cruise into one reasonably sized suitcase per person. Soft bags are preferable. There is only enough space on the barge transfer bus for up to 8 suitcases and 8 pieces of hand luggage.

Practical comfort and casual clothing is the norm aboard Kir Royale and for most excursions. The dress code for dinner is relaxed and informal. For the Captain's Farewell Dinner on the final evening, guests often dress-up, which is optional.

The weather in Champagne is generally warm. The weather is hottest in June, July, and August when temperatures

often reach the mid 30's°C / upper 80's°F.

Suggested things to pack:

- Light clothing including shorts and T-shirts. A sweater or lightweight jacket is recommended for evenings and the air-conditioned interiors.
- During spring and autumn, you may need medium weight clothing. A lightweight raincoat for showery times would be advisable.
- In summer, a sun hat can be useful.
- Comfortable walking shoes with textured non-slip soles are recommended.
- Kir Royale has a spa pool so don't forget your swimwear. Towels are provided.

Medical

Please let us know in advance of your cruise if you require frequent or ongoing medical attention.

The crew are unable to administer medicines but can accompany you to a chemist for you to purchase any necessary medicines. Due to your cruise often being in a rural location, we recommend you bring all necessary medication with you.

Doctors are usually not far away for an urgent consultation and the Emergency Services can be called if required.

Problem during your Cruise

If you have a problem during your cruise, please give us the immediate opportunity to make things right. Please bring any concern to the private attention of your Captain who will often be able to solve any issue immediately.

Restricted Mobility

Please let us know in advance of your cruise if you have a physical disability and require any assistance. Our barges are generally not suitable for passengers with significant mobility problems or disabilities. If in doubt, please consult our Customer Service team.

Kir Royale has a gangplank to the deck level from the bank of the canal with handrails. There are no steps from the deck to the saloon but there are 12 steps between the saloon & the lower deck and the cabins.

Wheelchairs cannot be used on-board and can only be used to help get round on excursions where the ground is suitable. If you would like to hire a wheelchair to be available for your arrival, please notify our Reservations team at least 8 weeks before departure. The small hire charge should be paid directly to the barge Captain on arrival and is approximately 100 Euros.

Safety and Security

Once you are on board, your Captain will talk you through the Cruise Safety Procedures. Safety Instructions are detailed on the last page of this document.

Please note that European Waterways cannot be responsible for any valuables that you bring on board. We strongly recommend that you do not bring valuables with you unless required and that you ensure that all valuables are covered by your travel insurance.

Safes are provided in each cabin on board but cabin doors are not usually locked for safety reasons.

Smoking

We have a strict non-smoking policy for safety reasons and for the comfort of your fellow passengers.

If you would like to smoke, we request that you do so outside or on the deck away from fellow passengers.

Sundeck

There are 3 outdoor sundecks - the forward deck with heated spa pool; the aft deck which is partially covered for outdoor dining; and the upper sundeck accessible via an outside staircase. There are also 8 reclining chairs. Exact dimensions to be confirmed.

Themed Cruises

Please contact our Reservations team for more details. Special interest cruises often incur a supplement .

Tipping

A service charge is not included in the cruise fare. Tipping is entirely discretionary but is greatly appreciated by the crew if you would like to acknowledge the standard of service provided. As a guideline, the recommended industry standard is between 5 and 10% of the cruise fare if you are fully satisfied with the service you have received.

The usual way to tip is to give the amount as one lump sum in cash to the Captain / Cruise Director on the last day of the cruise. He/she will distribute the amount equally amongst the crew.

Euros or Dollars are equally appreciated. ATMs are accessible for cash withdrawal on most itineraries during the cruise and the crew can advise where these are located.

If you have any questions on the above, please speak to the Captain.

Transfers

For details of the Kir Royale vehicle, please see "Excursions". The approximate transfer duration between Paris & Kir Royale is 2 or 2.5 hours depending on the cruise direction.

Water

Tap water in France and on board Kir Royale is potable and bottled water is available.

Safety Instructions on Kir Royale

On arrival the Captain will talk you through the Cruise Safety Procedures on board.

In addition, it is important that all passengers are familiar with the safety instructions detailed below.

- Please follow the instructions of the Captain and crew at all times.
- Remember that decks can be slippery. Please wear non-slip shoes and do not run or jump whilst on board.
- Do not walk on the side or rear decks or outside the guard rails.
- Passengers are not permitted in the engine rooms, technical areas or crew accommodation at any time, or in the galley or wheelhouse unless accompanied by a crew member.
- Do not embark or disembark the barge unless the gangplank and handrail are in place or the crew have advised that it is safe to do so. Never do so when the barge is moving.
- Be careful when the vessel is being moored up with the barge ropes. In particular do not step into a loop in the rope or try to release the mooring rope from a bollard.
- Keep clear of any overhead obstructions and remain seated if on deck whilst the barge passes under bridges with restricted headroom.
- Do not attempt to touch the sides of any lock or bridge.
- Do not open lower deck portholes whilst the barge is moving.
- Life jacket preservers are located in designated lockers in your cabin or in designated deck lockers. Once on board, please take the time to identify their location and read the instructions.
- For fire safety reasons, smoking is not permitted anywhere inside the barge.
- The barge's equipment such as the hot tub and bicycles must only be used following preparation by the crew. Use of the bicycles and the hot tub is at your own risk. Breakable glasses are not permitted in the hot tub and alcohol consumption is not advised.
- There is an open bar policy on board. However, excessive alcohol consumption can be dangerous, particularly in a warm climate and in proximity to deep water and the Captain has the discretion to withhold alcohol if safety to passengers or crew is at risk.

In an emergency

- Keep calm. Do not return to your cabin to recover your possessions.
- If you discover a fire on board, sound the fire alarm and notify a crew member immediately. If possible, close doors behind you to confine the fire. Please take the time to identify the location of fire alarms and fire extinguishers.
- If the alarm sounds or you hear repeated continuous blasts on the barge horn, you must, if possible, assemble on the sundeck for further instructions.
- If you discover water below deck, notify a crew member immediately and go to the sundeck to await further instructions.
- If you are in your cabin and the way to the sundeck is obstructed, follow the signs to the alternative fire exit. Please take the time to identify all fire exits.
- The emergency number for fire, police or medical assistance on all public phone networks is 112.

Please ask a member of the crew on board if you require any further safety advice